

# LED SOLAR STREET LIGHT

## ELITE III PRO



Unilumin

TOGETHER, FOR A BRIGHTER FUTURE

UNILUMIN GROUP CO., LTD

HQ Address: 112 Yongfu Rd., Qiaotou Village, Fuyong Town, Baoan District, Shenzhen 518103 China  
Manufacturing Base: No.105 Zhongnan Avenue, Minmin Town, Zhongshan, Guangdong Province, China  
TEL: +86-0755-29918999 | FAX: +86-0755-29912092 | E-mail: ledlighting@unilumin.com  
www.unilumin.com | www.unilumin-lighting.com

The product designs and specifications are subject to change without prior notice.  
All rights reserved, copy is prohibited without the permission of Unilumin Group Co., Ltd.



Official Website



Facebook



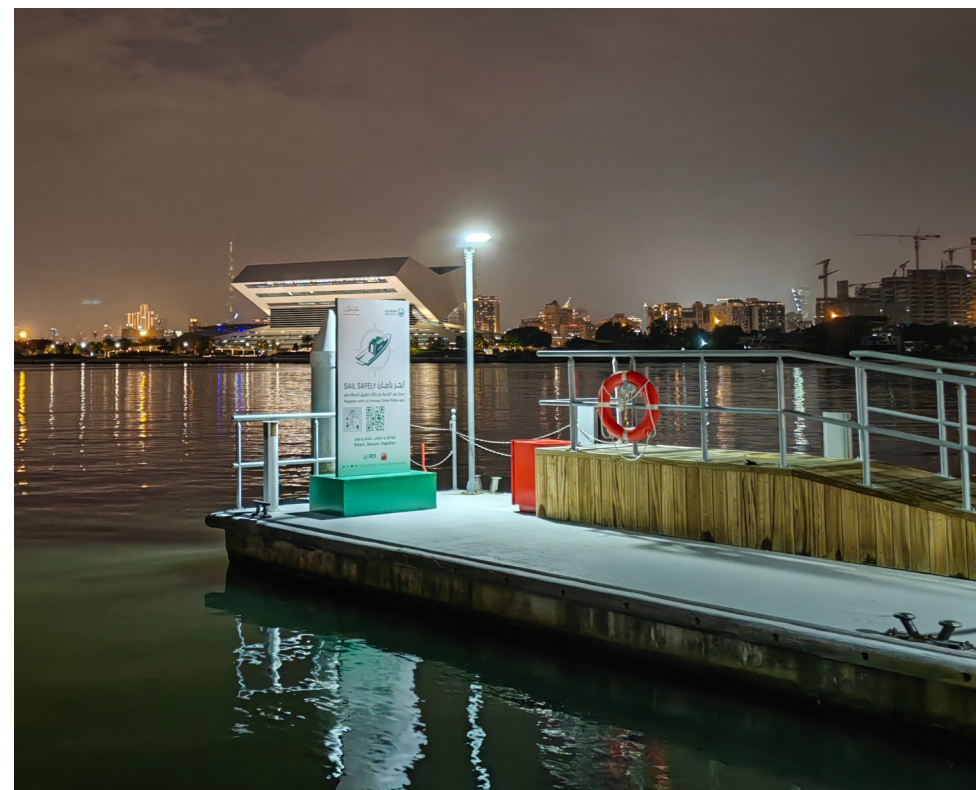
Twitter



LinkedIn



Instagram





## SunMaster ELite III Pro Series

SunMaster Elite III Pro combines efficiency and durability with advanced solar technology. Featuring a high-capacity LiFePO<sub>4</sub> battery, top-tier monocrystalline solar panels, and intelligent dimming, it ensures consistent, high-brightness performance year-round. Its adjustable design and durable build make it ideal for diverse applications. With up to 180W power and 37,800 lm output, the battery sustains lighting for up to two cloudy days, making it an ideal replacement for traditional street lights on highways and main roads.

### Features & Benefits

1. Highly efficient with 210lm/W efficacy
2. Adjustable elevation angle of lamp:  $-40^{\circ}$ ~ $+40^{\circ}$
3.  $\pm 60^{\circ}$  optical module mounting angles adjustable
4. Optional intelligent 4G/Lora remote control solution
5. LiFePO<sub>4</sub> battery with 2000 lifecycles
6. High-quality monocrystalline solar panel
7. Intelligent charge and discharge management, 365 day light, 2 overcast days autonomy
8. Ideal for highways and main roads as a grid-free alternative

### Application



Expressways



Main Roads



Secondary Roads



Access Roads

### Hassle-free maintenance

Easy access to the battery compartment for quick and convenient maintenance

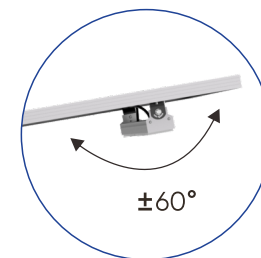


### High Power Long-lasting Performance

Up to 180W power and 37,800lm output  
Battery sustains lighting for up to 2 cloudy days

### $\pm 60^{\circ}$ LED module angle adjustable

Achieve the ideal lighting angle to suit all latitudes globally

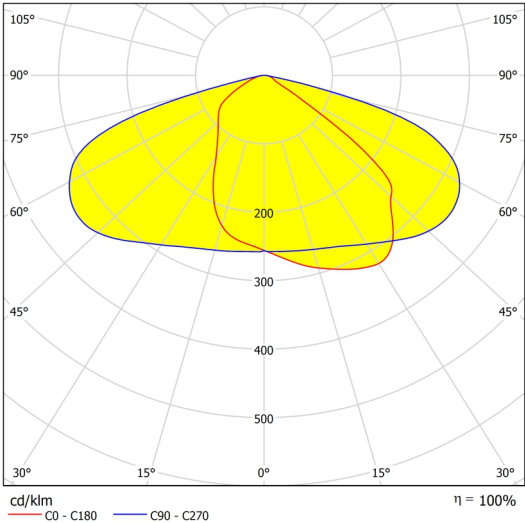


$\pm 40^{\circ}$

### $\pm 40^{\circ}$ Mounting angle range

Ideal for regions that require solar panel tilt for a better charging efficiency

Light Distributions



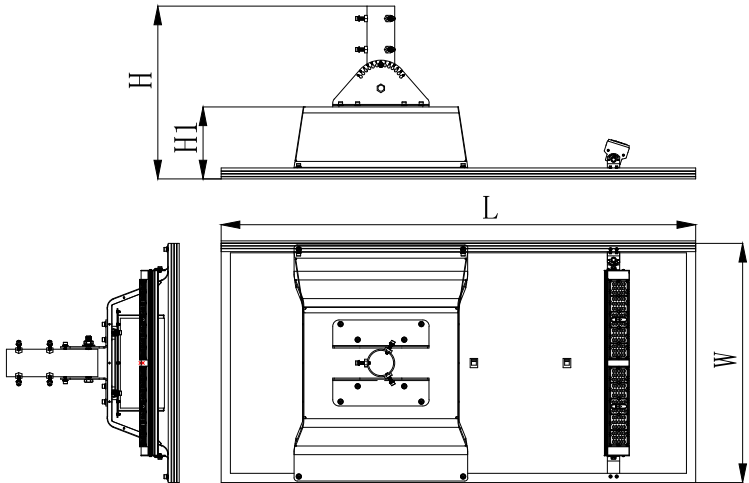
Type II (UNI-838-10)

5050 Light Source

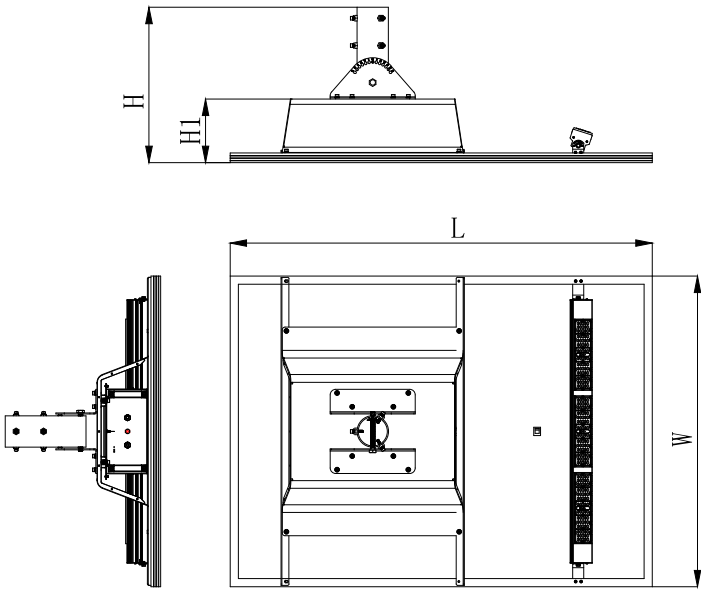
Power (W)	LED QTY (pcs)	Light Distribution	5000K Ra70@Tq=25°C	
			Luminaire Efficiency	Luminous Flux
60	48	UNI-838-10 (T2S)	210 lm/W	12600 lm
80	96			16800 lm
100	96			21000 lm
120	96			25200 lm
150	144			31500 lm
180	144			37800 lm

The luminaire efficacies are the typical values, ±7% tolerance is reserved.

Dimensions



60W/80W/100W/120W



150W/180W

Parameters

Product Model	UNI-SL04 -1-60	UNI-SL04 -2-80	UNI-SL04 -3-100	UNI-SL04 -4-120	UNI-SL04 -5-150	UNI-SL04 -6-180
System Voltage	12V	12V	24V	24V	24V	24V
Monocrystalline Solar Panel	120W/18V	160W/18V	200W/36V	240W/36V	300W/36V	360W/36V
LiFePO <sub>4</sub> Battery	12.8V/90AH	12.8V/120AH	25.6V/75AH	25.6V/90AH	25.6V/120AH	25.6V/135AH
Overcast Days	2 Days					
System Power (W)	60	80	100	120	150	180
Hybrid	Battery					
Luminaire Efficiency (Tq=25°C)	210lm W@4000K					
Luminous Flux (lm)	12600	16800	21000	25200	31500	37800
Default Lighting Mode*	4hrs 100%+2Hrs60%+5hrs 30%+30% Until dawn (10-15hrs) Reference sunshine hours 5 KWH/m <sup>2</sup> /day					
CCT	4000K (3000K/4000K/5000K/6500K)					
CRI	Ra>70					
Charge Temperature	0°C~55°C					
Discharge Temperature	-10°C~55°C					
Storage Temperature	0°C~55°C					
Housing Materials	SPCC Housing + Extruded Aluminum Frame + PC					
Finishing	Black RAL9004					
IP/IK	IP66/IK08 (Solar panel: IK07)					
Insulation Class	Class III					
Spigot Diameter (mm)	Φ76	Φ76	Φ76	Φ76	Φ104	Φ104
Installation Height (m)	6~8	6~8	8~10	8~10	10~12	10~12
Wind-Resistance (km/h)	130					
Luminaire Dimension (mm)	1080×586×557	1460×586×557	1344×771×557	1530×771×557	1318×1134×567	1540×1134×567
Net Weight (±5kg)	35	40	45	48.9	60	67

Note: The tolerance of Luminous Flux is ±7%

