

# LED LANDSCAPE LIGHT

# BETA



**Unilumin**

TOGETHER, FOR A BRIGHTER FUTURE

UNILUMIN GROUP CO., LTD

HQ Address: 112 Yongfu Rd., Qiaotou Village, Fuyong Town, Baoan District, Shenzhen 518103 China  
Manufacturing Base: Unilumin Industrial Park, 6 North Lanjing Road Pingshan District, Shenzhen, China  
TEL: +86-0755-29918999 | FAX: +86-0755-29912092 | E-mail: ledlighting@unilumin.com  
www.unilumin.com | www.unilumin-lighting.com

The product designs and specifications are subject to change without prior notice.  
All rights reserved, copy is prohibited without the permission of Unilumin Group Co., Ltd.



Official Website



Facebook



Twitter



LinkedIn



Instagram

Published: October 2023



UNILUMIN GROUP CO., LTD



## Beta Series

Beta—the perfect fusion of beauty and practicality. Its sleek design radiates elegance while assuring dependable performance via superior heat dissipation. You can also embrace sustainability with its smart controls feature and unlock the potential of your environment with various optical options to create captivating landscapes.

### Features & Benefits

1. Effortless installation and maintenance
2. Enhanced aesthetic with a sleek and elegant design
3. Exceptional heat dissipation for reliable performance
4. More sustainable with intelligent control system
5. Versatile optics options for more applications

### Application



Residential Street



Pedestrian Path



Park & Square



Tourist attraction

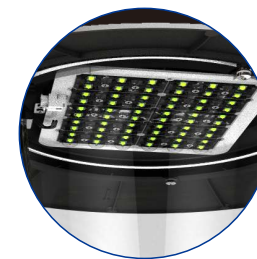


### High-strength lamp body

Die-casting aluminum housing sturdy and durable

### Supreme lighting performance

Top-class LEDs and various precise light distribution lenses optional



### Self-cleaning tilt cover design

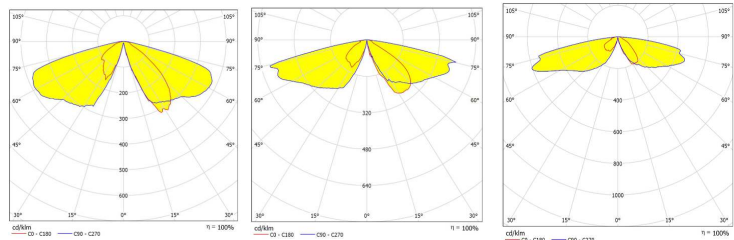
Self-cleaning on rainy days to prevent dust accumulation for a better image

### Lighting on demand

Compatible with intelligent control system, more sustainable



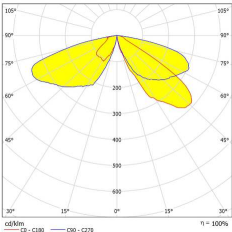
Light Distributions



Type II (UNI-540)

Type II (UNI-618)

Type II (UNI-710)



Type II (UNI-711)

5050 Light Source

Power (W)	LED QTY (pcs)	Light Distribution	4000K Ra70@Ta=25°C		3000K Ra70@Ta=25°C	
			Luminaire Efficiency	Luminous Flux	Luminaire Efficiency	Luminous Flux
15	6	UNI-618	125 lm/W	1875 lm	115 lm/W	1725 lm
25	12			3125 lm		2875 lm
35	12			4375 lm		4025 lm
45	18			5625 lm		5175 lm
60	24			7500 lm		6900 lm
80	30			10000 lm		9200 lm

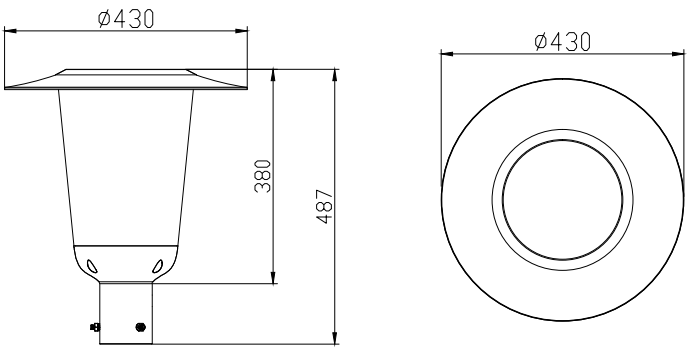
The luminaire efficacies are the typical values, ±7% tolerance is reserved.

3030 Light Source

Power (W)	LED QTY (pcs)	Light Distribution	4000K Ra70@Ta=25°C		3000K Ra70@Ta=25°C	
			Luminaire Efficiency	Luminous Flux	Luminaire Efficiency	Luminous Flux
15	16	UNI-540	110 lm/W	1650 lm	103 lm/W	1540 lm
25	32			2750 lm		2567 lm
35	40			3850 lm		3593 lm
45	48			4950 lm		4620 lm
60	64			6600 lm		6160 lm
80	80			8800 lm		8213 lm



Dimensions



Parameters

Product Model	UNI-YA04-1
Input Voltage	AC100-277V 50/60Hz
Rated Power	15-80W
Luminous Efficacy	110-125lm/W
Luminous Flux (lm)	1650-10000
CCT	3000K/4000K/5000K/5700K/6500K
CRI	70
Housing Materials	Die-casting aluminum
IP / IK	IP66/IK08
Product Dimension (mm)	430×430×487
Packing Dimension (mm)	560×555×560
Net Weight(kg)	4.3±0.2
Gross Weight (kg)	7.4±0.2

Note: The tolerance of Luminous Flux is ±7%

