



Opera

UNI-YA03-1



Post top

UNI-YA03-2



Mast arm

UNI-YA03-3



Span wires

Features:

- **Complete configuration to adapt to various lighting environments**

- Rated Power Range: 18W-80W;
- Rated Input Voltage: AC220-240V/100-240V/100-277V;
- Pole Diameter: $\Phi 76$;

- **High-strength lamp body, high protection level, sturdy and durable**

- Housing Material: Die-casting aluminum alloy+ Ultra transparent tempered glass;
- Protection Degree: IP66, IK08;
- Operating environment: Operating Temperature - 40°C ~ 50°C, Operating Humidity 10% ~ 90 %RH, Storage Temperature -40 °C ~ 55 °C.

- **Support intelligent dimming**

- Control mode: Power line communication(Internal), NB-IoT(Internal), ZigBee (Internal), Power timer dimming;

Landscape Light Specification

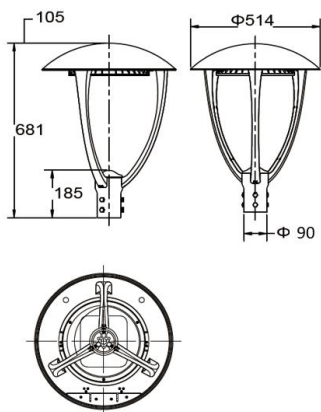


Product Model	UNI-YA03-1-18	UNI-YA03-1-25	UNI-YA03-1-35	UNI-YA03-1-45	UNI-YA03-1-65	UNI-YA03-1-80
Power (W)	18	25	35	45	65	80
Luminous Flux (lm)	1980/2700	2750/3750	3850/5250	4950/6750	7150/9750	8800/12000
Power Factor	≥0.92	≥0.95	≥0.95	≥0.95	≥0.95	≥0.95
Input Voltage	AC100-277V 50/60Hz					
LED	Osram/ Lumileds					
Driver	Inventronics/Philips/Moso/Sosen					
CCT (K)	3000K/4000K/5000K/5700K/6500K					
Luminaire Efficiency@4000K、Ta=25°C (lm/W)	Option:110,150lm/W					
CRI	70					
Working Temp.	- 40 °C ~ 50 °C					
Working Humidity	10 % ~ 90 % RH					
Storage Temp.	- 40 °C ~ 55 °C					
Housing Materials	Die-casting aluminum					
IP Grade	IP66					
IK Grade	IK08					
Life Span (Hrs)	50,000					
Packing Dimension (mm)	590×590×250					
Net Weight (kg)	9.2±0.2					
Gross Weight (kg)	12±0.2					

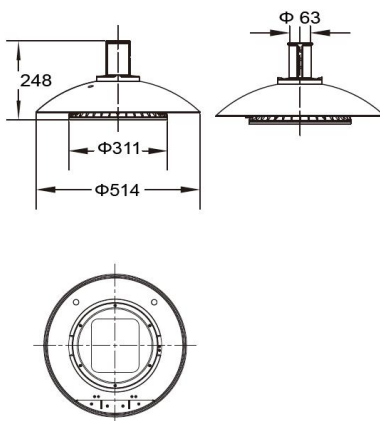
Note: The tolerance of Luminous Flux for lighting products is ±7%

Product Dimension:

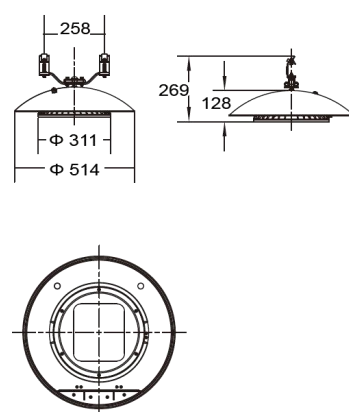
UNI-YA03-1



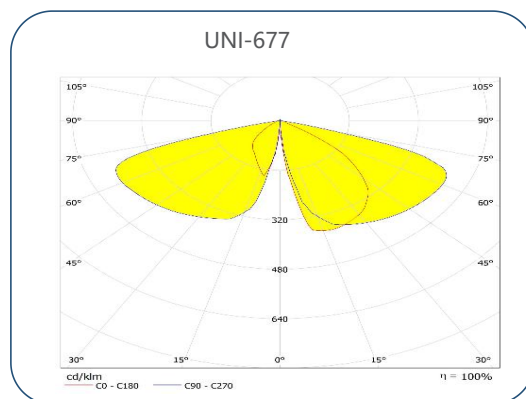
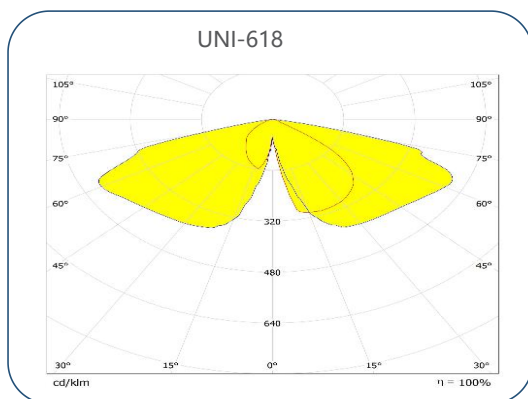
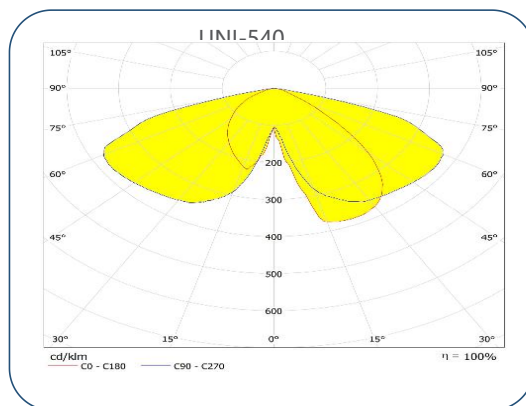
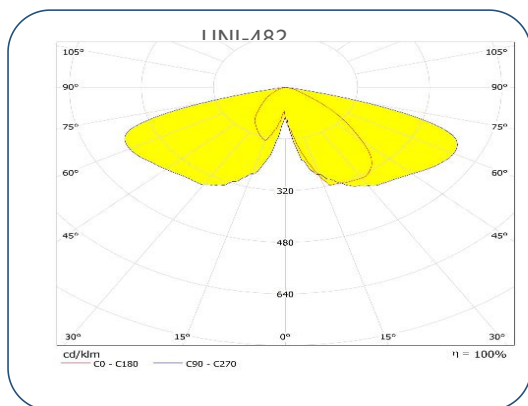
UNI-YA03-2



UNI-YA03-3



Light Distributions:

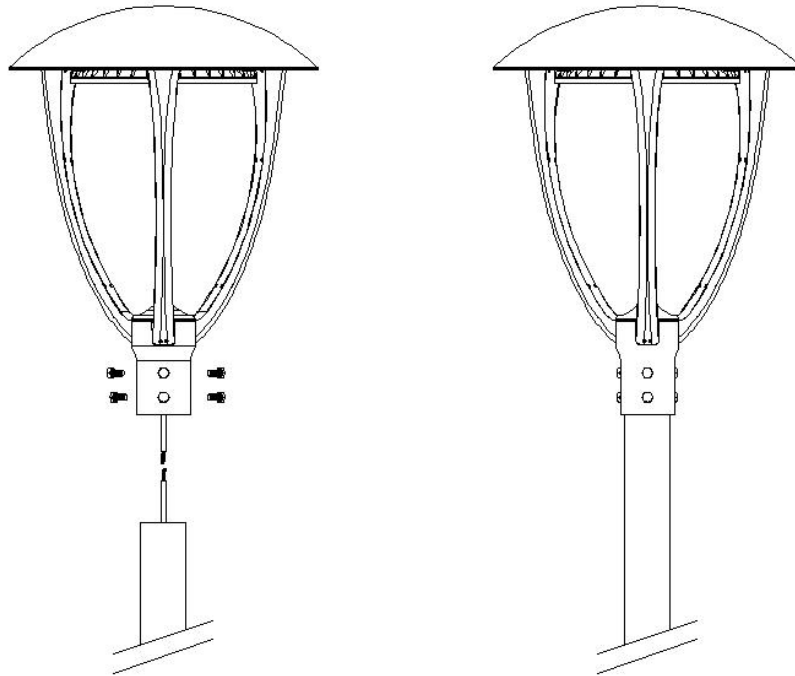


Note: The pictures are only the references of typical light distribution type, and the specific parameters shall be subject to the actual IES of the product.

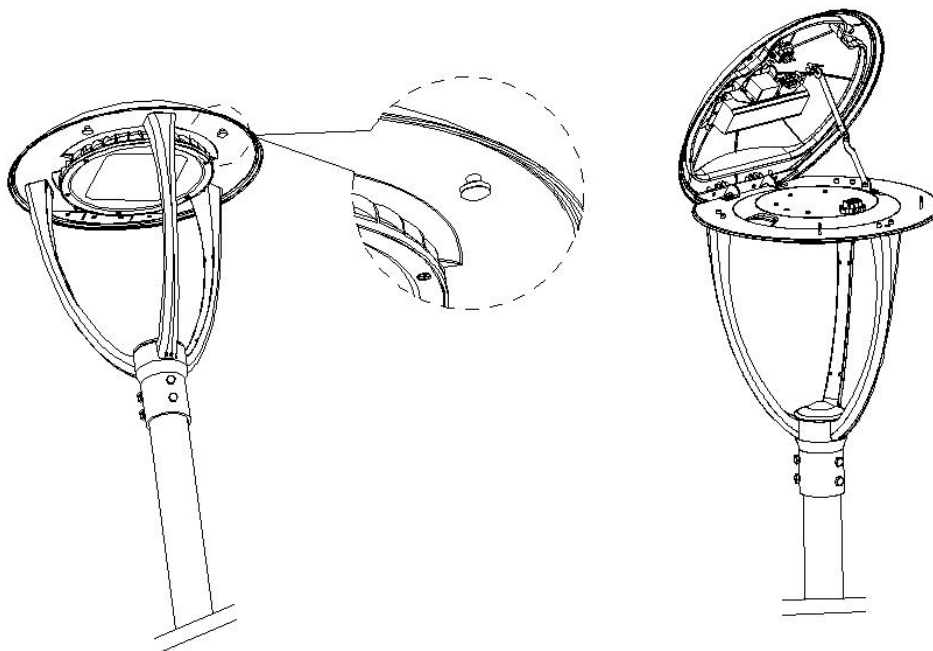
Installation Diagram:

UNI-YA03-1

1. Wire the power cables according to the picture below: L(BRN/BLK) live wire, N (BLU/WHT) neutral wire, \oplus (YG/GRN) ground wire), making the connection waterproof. Mount the luminaire into the pole and tighten with hexagon nut.



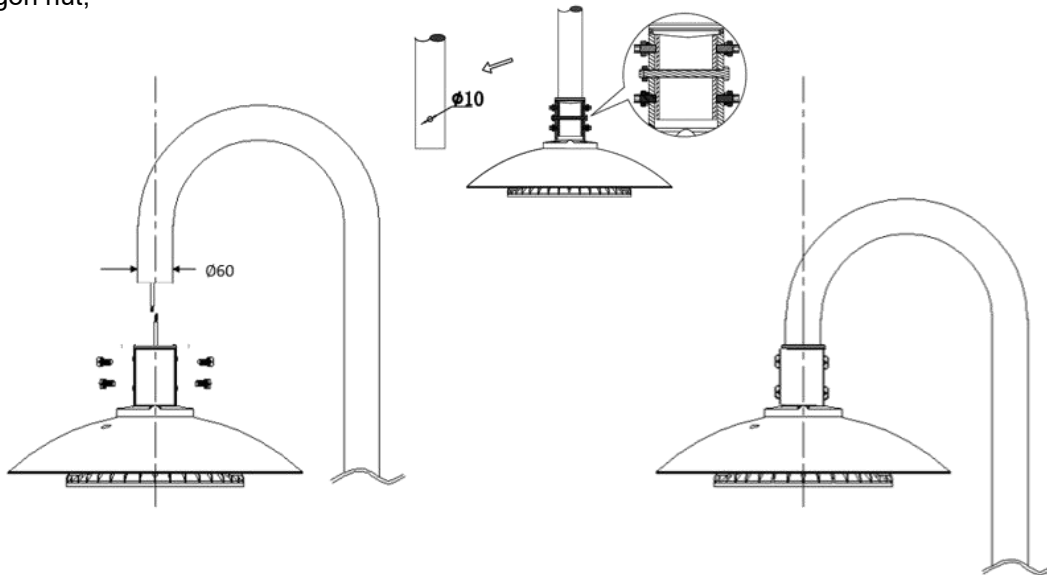
2. Unscrew the two hand-tightened nuts on bottom of upper cover, and open the upper cover for maintenance.



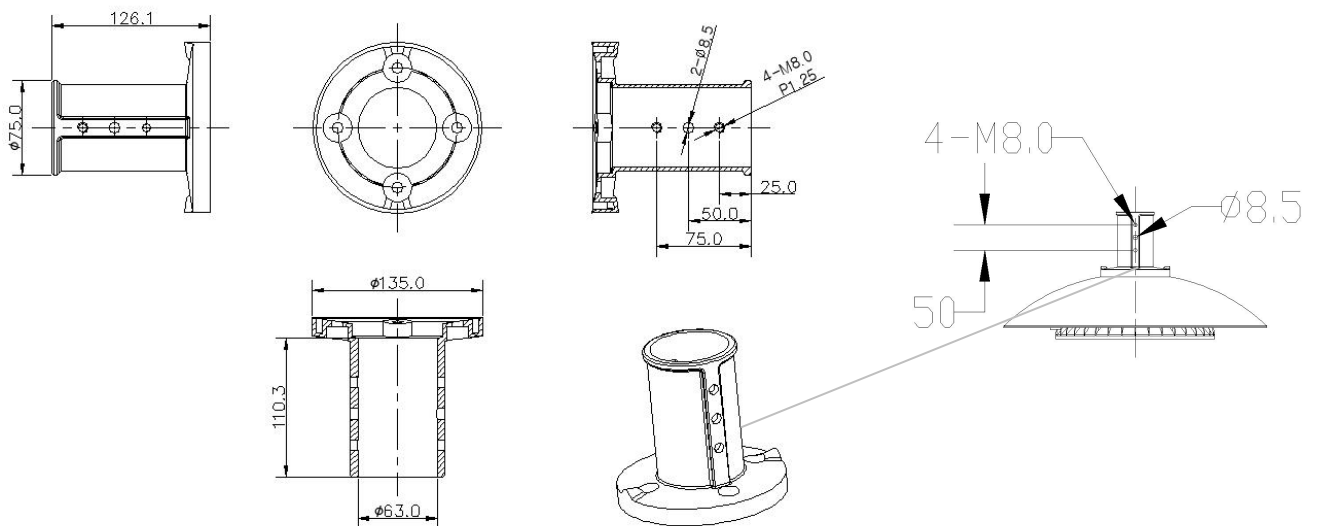
Installation Diagram:

UNI-YA03-2

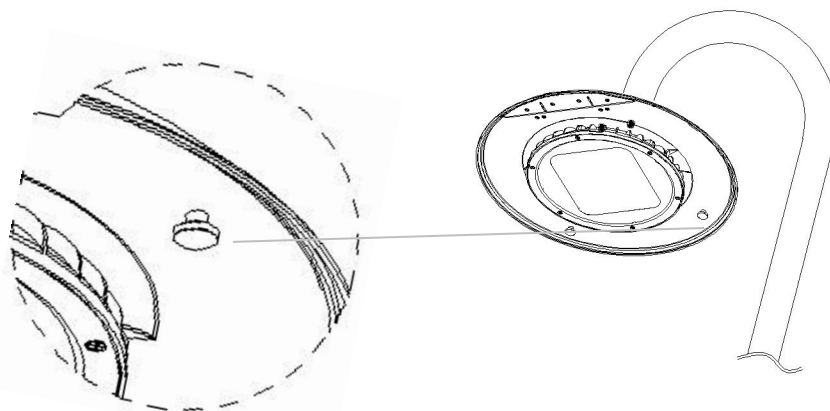
1. Wire the power cables according to the picture below: L(BRN/BLK) live wire, N (BLU/WHT) neutral wire, \oplus (YG/GRN) ground wire), making the connection waterproof. Mount the luminaire into the pole and tighten with hexagon nut;



Spigot Dimension:



2. Unscrew the two hand-tightened nuts on bottom of upper cover, and open the upper cover for maintenance.



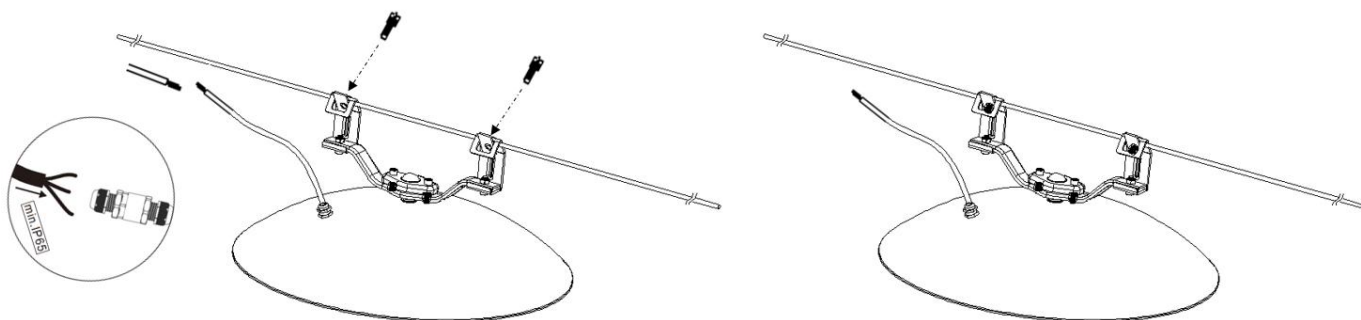
Installation Diagram:

UNI-YA03-3

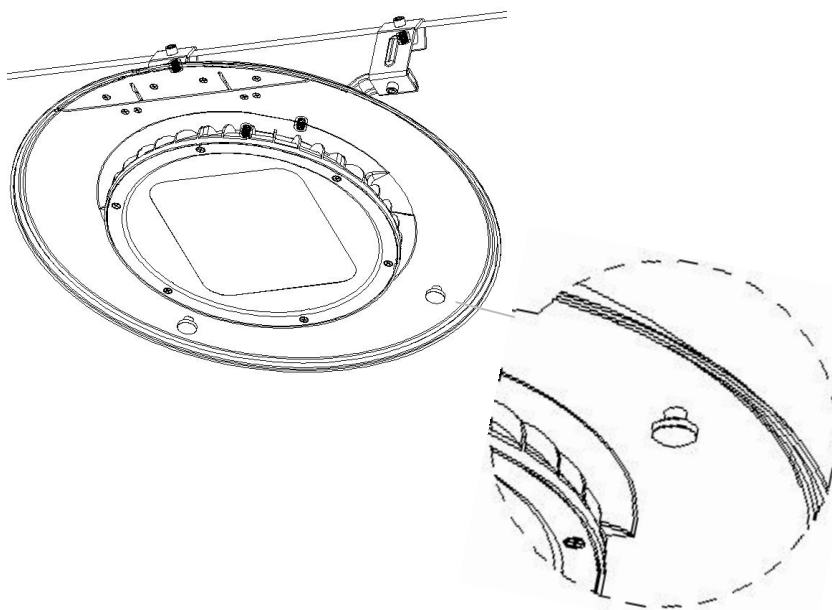
1. Mount the luminaire onto wires according to the picture below; wire the power cables according to the picture below: L(BRN/BLK) live wire, N (BLU/WHT) neutral wire, \oplus (YG/GRN) ground wire) .

Note: Self-provided waterproof connector(IP65 is the minimum rating) is required for wiring, fixing the wire after wiring.

Fix the luminaire position by tighten the two M8 bolts and rope.



2. Unscrew the two hand-tightened nuts on bottom of upper cover, and open the upper cover for maintenance.



Maintenance:

- Keep the luminaire in clean and good maintenance to ensure long lifespan and safety use.
- Wipe the luminaire with soft cloth dipped with soapy water (squeeze the water out first), and then make it clean and dry with a new cloth;
- Do not use volatile chemical liquids such as gasoline, alcohol or insecticides to clean the luminaire, otherwise damage occurs.

Cautions:

- Make sure safe and complete installation before power on;
- Do not mount the luminaire onto ordinary combustible materials directly in any circumstances;



- Do not cover the luminaire with any objects;
- Do not use the product in a closed environment;
- The maintenance of the luminaire must be done by professionals;
- The external wiring of the luminaire is Y-shaped. If damaged, shall be replaced with wires provided by the original manufacturer or its service team;
- The light source, if damaged, shall be replaced with chips provided by the manufacturer or service team.

Warning, danger of electric shock



- Statement: The luminaire complies with the non-hazardous requirements in the photobiological safety standard IEC 62471:2006;
- Product specifications are subject to change without notice.