



Beta



Dark Gray (PANTONE:8403C)

Features:

- **Complete configuration to adapt to various lighting environments**

- Rated Power Range: 15W-80W;
- Rated Input Voltage: AC220-240V/100-240V/100-277V;
- Pole Diameter: $\Phi 76\text{mm}$;

- **High-strength lamp body, high protection level, sturdy and durable**

- Housing Material: Die-casting aluminum alloy+ PC;
- Protection Degree: IP66, IK08;
- Operating environment: Operating Temperature - $40^{\circ}\text{C} \sim 50^{\circ}\text{C}$, Operating Humidity $10\% \sim 90\% \text{RH}$, Storage Temperature $-40^{\circ}\text{C} \sim 55^{\circ}\text{C}$.

- **Support intelligent dimming**

- Control mode: Power timer dimming;

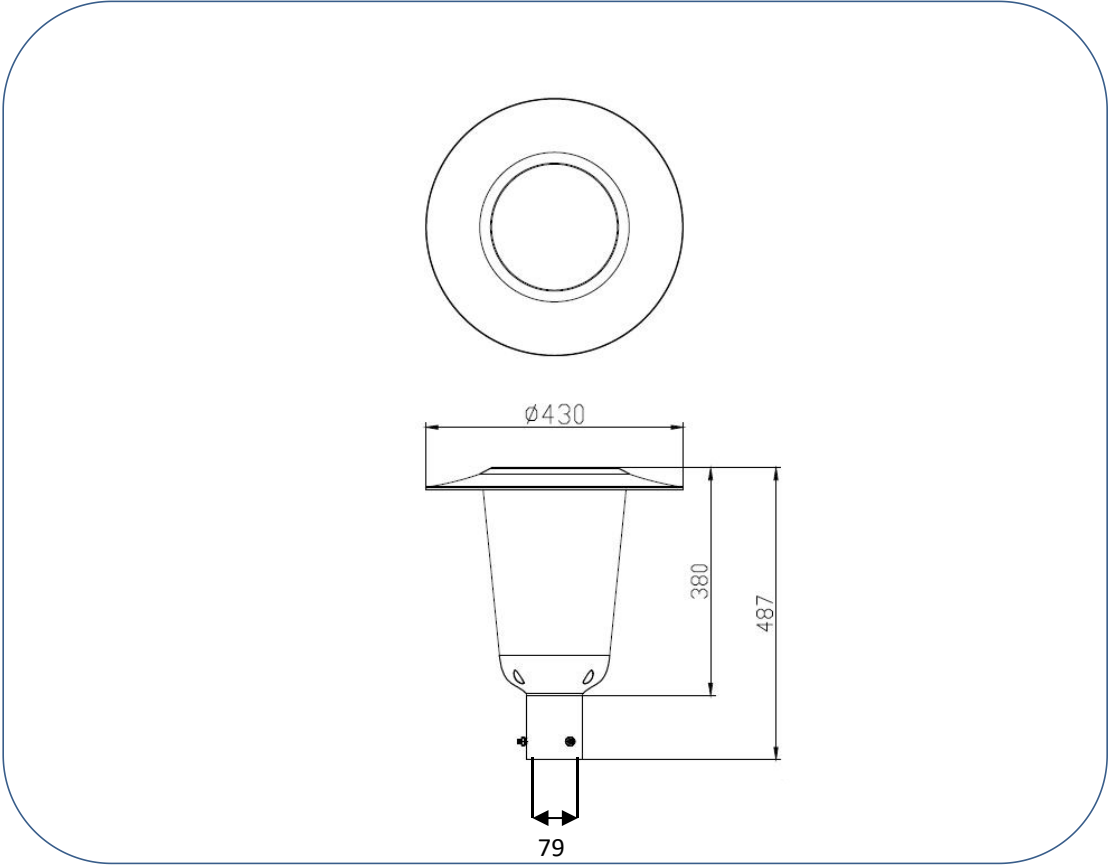
Landscape Light Specification



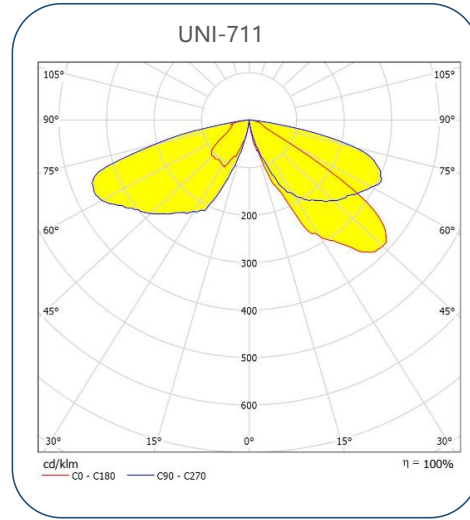
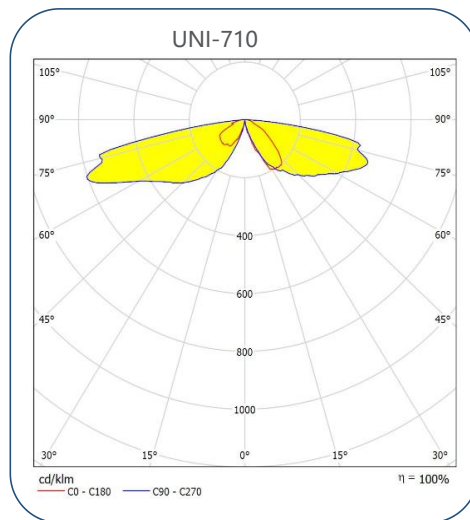
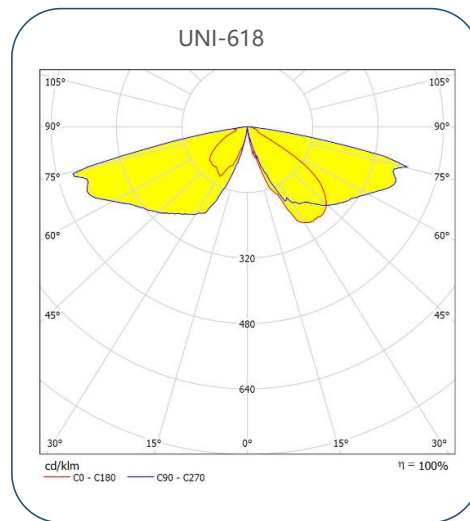
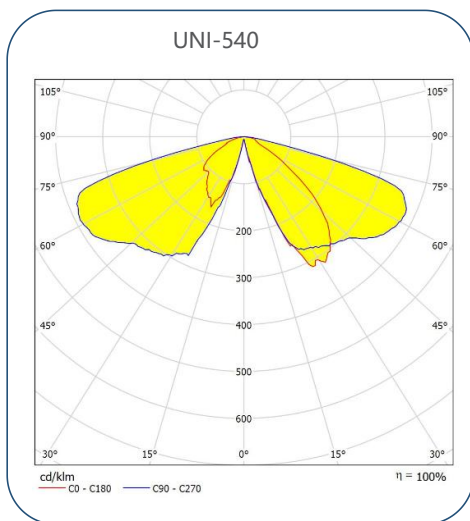
Product Model	UNI-YA04-1	UNI-YA04-1	UNI-YA04-1	UNI-YA04-1	UNI-YA04-1	UNI-YA04-1
Power (W)	15	25	35	45	60	80
Luminous Flux (lm)	1650/1875	2750/3125	3850/4375	4950/5625	6600/7500	8800/10000
Power Factor	≥0.92	≥0.95	≥0.95	≥0.95	≥0.95	≥0.95
Input Voltage	AC100-277V 50/60Hz					
LED	Osram/ Lumileds					
Driver	Inventronics/Philips/Moso/Sosen					
CCT (K)	3000K/4000K/5000K/5700K/6500K					
Luminaire Efficiency@4000K、Ta=25°C (lm/W)	Option:110,125lm/W					
CRI	70					
Working Temp.	- 40 °C ~ 50 °C					
Working Humidity	10 % ~ 90 % RH					
Storage Temp.	- 40 °C ~ 55 °C					
Housing Materials	Die-casting aluminum					
IP Grade	IP66					
IK Grade	IK08					
Life Span (Hrs)	50,000					
Max Projected Area (m²)	0.22	0.22	0.22	0.22	0.22	0.22
Product Dimension (mm)	430×430×487					
Packing Dimension (mm)	560×555×560					
Net Weight (kg)	4.3±0.2					
Gross Weight (kg)	7.4±0.2					

Note: The tolerance of Luminous Flux for lighting products is ±7%

Product Dimension:



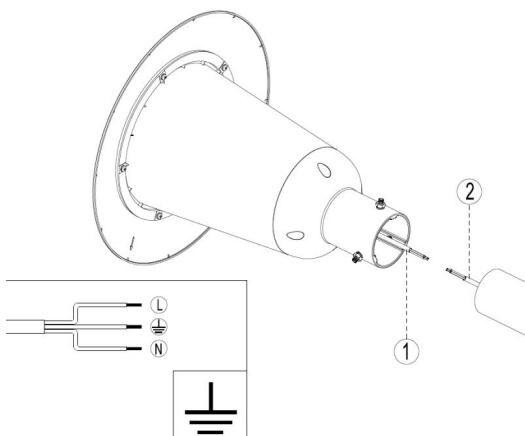
Light Distributions:



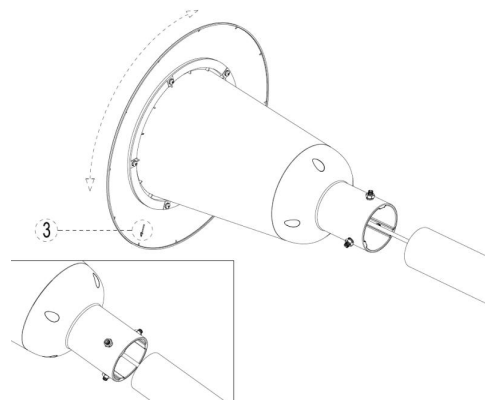
Note: The pictures are only the references of typical light distribution type, and the specific parameters shall be subject to the actual IES of the product.

Installation Diagram:

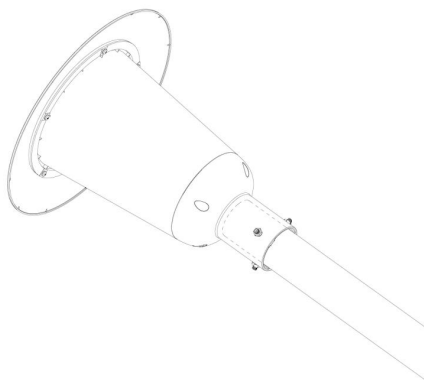
1. Wire the power cables of the luminaire and the pole according to the picture below (Brown-live line, Blue-neutral line, Yellow green-ground line) , making the connection waterproof.



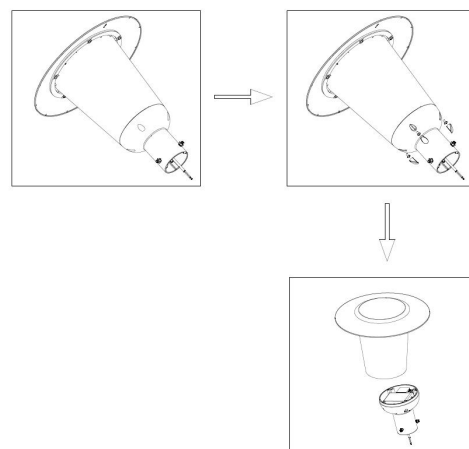
2. Mount the pole bracket into the luminaire, (arrow ③ on the luminaire indicates the projection direction)



3. Tighten three M8 bolts and nuts.



4. Unplug the 4 rubber plugs and loosen the screws, the base can be separated from the housing body for maintenance.



Maintenance:

- Keep the luminaire in clean and good maintenance to ensure long lifespan and safety use.
- Wipe the luminaire with soft cloth dipped with soapy water (squeeze the water out first), and then make it clean and dry with a new cloth;
- Do not use volatile chemical liquids such as gasoline, alcohol or insecticides to clean the luminaire, otherwise damage occurs.

Cautions:

- Make sure safe and complete installation before power on;
- Do not mount the luminaire onto ordinary combustible materials directly in any circumstances;



- Do not cover the luminaire with any objects;
- Do not use the product in a closed environment;
- The maintenance of the luminaire must be done by professionals;
- The external wiring of the luminaire is Y-shaped. If damaged, shall be replaced with wires provided by the original manufacturer or its service team;
- The light source, if damaged, shall be replaced with chips provided by the manufacturer or service team.

Warning, danger of electric shock



- Statement: The luminaire complies with the non-hazardous requirements in the photobiological safety standard IEC 62471:2006;
- Product specifications are subject to change without notice.