

LED  
STREET LIGHT

TUNA



TOGETHER, FOR A BRIGHTER FUTURE



UNILUMIN GROUP CO., LTD

HQ Address: 112 Yongfu Rd., Qiaotou Village, Fuyong Town, Baoan District, Shenzhen 518103 China  
Manufacturing Base: Unilumin Industrial Park, 6 North Lanjing Road Pingshan District, Shenzhen, China  
TEL: +86-0755-29918999 | FAX: +86-0755-29912092 | E-mail: ledlighting@unilumin.com  
www.unilumin.com | www.unilumin-lighting.com

The product designs and specifications are subject to change without prior notice.  
All rights reserved, copy is prohibited without the permission of Unilumin Group Co., Ltd.



Official Website



Facebook



Twitter



LinkedIn



Instagram

Published: October 2023

UNILUMIN GROUP CO., LTD



## About Unilumin

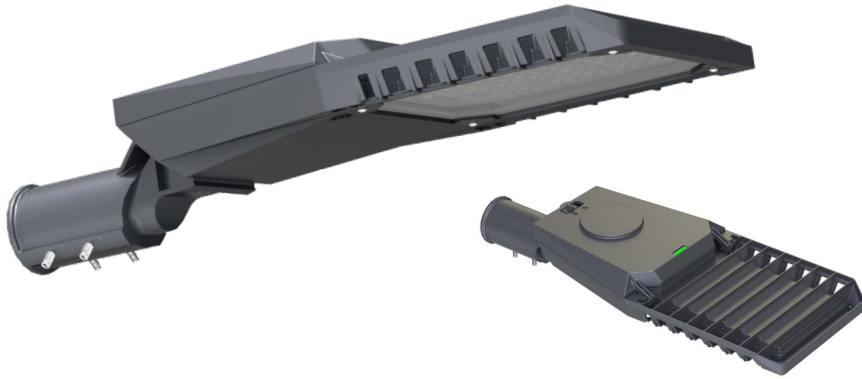
---

Established in 2004, is a world-class LED lighting and display solution provider. As a key business of Unilumin Group, Unilumin Lighting has established a firm foothold in the LED lighting industry and has been a trusted global partner offering comprehensive lighting solutions and exceptional customer service. Our relentless dedication to R&D and customer satisfaction has positioned Unilumin as a top LED lighting brand, known for our worldwide presence and core competitive edges.

## Why Choose Unilumin

---

-  **16** Years of Outdoor Lighting Expertise
-  ISO/IEC 17025 Accredited LAB & Precise Automatic Production
-  Flexible Customization Services
-  Recognized by Clients in Over **80** Countries



## Tuna Series

Tuna is a highly efficient LED street light thanks to the excellent optical system. Designed for large-scale public lighting projects, Tuna is the ideal luminaire for municipalities. With its high efficiency and low initial cost, Tuna enables a fast payback and significant savings in terms of energy consumption. Available with different optics and lumen packages.

### Features & Benefits

1. Die-casting aluminum housing, robust and durable
2. Standard and tool-free range are optional
3. Quick tool-free latch access to the driver compartment for easy maintenance
4. Future-proof and smart ready with NEMA and Zhaga interface alternative
5. Excellent thermal management design ensures better performance
6. Compatible with both post top and side entry installations
7.  $-20^{\circ}$  to  $+15^{\circ}$  tilt steps for easy and quick on-site optical compartment adjustment
8. Mounting interface  $\Phi 42\text{mm}$ ,  $\Phi 60\text{mm}$  and  $\Phi 76\text{mm}$  optional
9. Built-in bubble level for easy installation

### Application

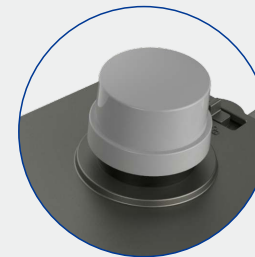


### Tool-free access

Maximize the ease of maintenance

### Excellent thermal management

Air convection cooling design for more efficient heat dissipation



### Smart Ready & Future-proof

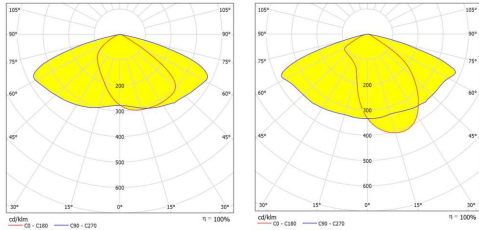
Compatible with NEMA & Zhaga interface, enhanced versatility and compatibility

### Built-in bubble level

Easy installation



## Light Distributions



Type II (UNI-851)

Type II (UNI-842)

## 3030 Light Source

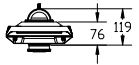
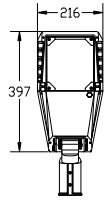
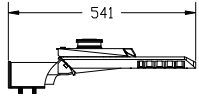
Power (W)	LED QTY (pcs)	Light Distribution	4000K Ra70@Ta=25°C		3000K Ra70@Ta=25°C	
			Luminaire Efficiency	Luminous Flux	Luminaire Efficiency	Luminous Flux
20	24	UNI-851	125 lm/W	2500 lm	117 lm/W	2340 lm
30	32			3750 lm		3510 lm
40	40			5000 lm		4680 lm
50	48			6250 lm		5850 lm
60	64			7500 lm		7020 lm
75	80			9375 lm		8775 lm
90	96			11250 lm		10530 lm
100	96			12500 lm		11700 lm
120	120			15000 lm		14040 lm
150	160			18750 lm		17550 lm
180	192			22500 lm		21060 lm
200	192			25000 lm		23400 lm

## 5050 Light Source

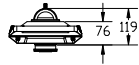
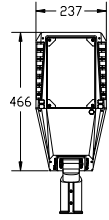
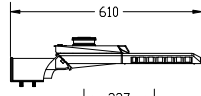
Power (W)	LED QTY (pcs)	Light Distribution	4000K Ra70@Ta=25°C		3000K Ra70@Ta=25°C	
			Luminaire Efficiency	Luminous Flux	Luminaire Efficiency	Luminous Flux
20	24	UNI-842	155 lm/W	3100 lm	145 lm/W	2900 lm
30	36			4650 lm		4350 lm
40	46			6200 lm		5800 lm
50	54			7750 lm		7250 lm
60	54			9300 lm		8700 lm
75	60			11625 lm		10875 lm
90	60			13950 lm		13050 lm
100	60			15500 lm		14500 lm
120	72			18600 lm		17400 lm
150	90			23250 lm		21750 lm
180	100			27900 lm		26100 lm
200	112			31000 lm		29000 lm

The luminaire efficacies are the typical values, ±7% tolerance is reserved.

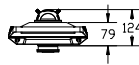
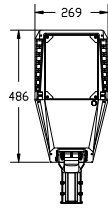
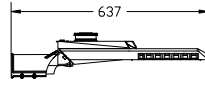
## Dimensions



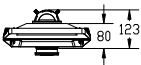
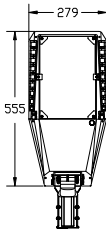
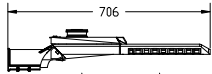
UNI-STB9-1(20-40W)



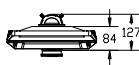
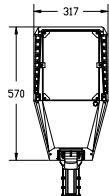
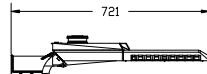
UNI-STB9-2(50-75W)



UNI-STB9-3(90-120W)



UNI-STB9-4(150W)



UNI-STB9-5(180-200W)

## Parameters



Product Model	Micro UNI-STB9-1	Mini UNI-STB9-2	Mini plus UNI-STB9-3	Midi UNI-STB9-4	Maxi UNI-STB9-5
Input Voltage	AC100-277V 50/60Hz				
Rated Power	20-40W	50-75W	90-120W	150W	180-200W
Luminous Efficacy	125-155lm/W				
Luminous Flux	2500-6200lm	6250-11625lm	11250-18600lm	18750-23250lm	22500-31000lm
CCT	3000K/4000K/5000K/5700K/6500K				
CRI	70				
Housing Materials	Die-casting Aluminum				
IP / IK	IP66/IK08				
Luminaire Dimension(mm)	541×216×119	610×237×119	637×269×124	706×279×123	721×317×127
Packing Dimension(mm)	540×315×205	540×345×205	565×345×215	645×360×215	675×415×215
Net Weight(kg)	3.5±0.2	4.0±0.2	6.0±0.2	6.5±0.2	7.5±0.2
Gross Weight(kg)	4.5±0.2	5±0.2	7.5±0.2	8.0±0.2	9.5±0.2

Note: The tolerance of Luminous Flux is ±7%

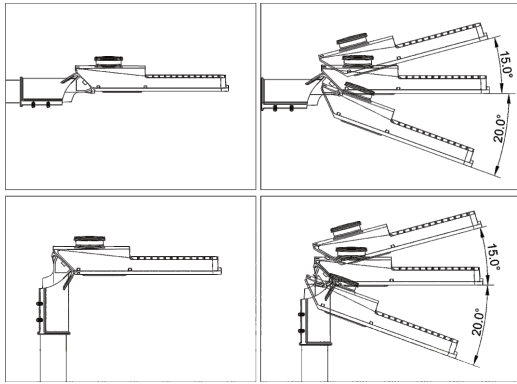
## Adapter



Micro~Mini

Mini Plus~Maxi

- Dual-purpose spigots for side entry and post top installation
- $-20^{\circ}$  to  $+15^{\circ}$  maximum tilt steps in 5-degree
- Constructed from robust die-casting aluminum
- Stainless steel hardware
- 42 / 60 / 76 mm diameter options cater for existing or newly fabricated light poles



## Controller



NEMA Control

### Features

- With PWM and 0-10V dimming interfaces
- With the data acquisition of parameters like current, voltage, power and power factor
- With reporting the analysis of power consumption and energy saving
- With monitoring and detecting the status of LED luminaire
- Automatic faulty reporting function
- With surge protection function
- IP65 rated

Communication Interface	Communication Method	Communication Distance	Dimming Signal
NEMA	LoRa / ZigBee NB / 4G LTE	LoRa: 1000M; ZigBee: 200M NB: ∞; 4G LTE: ∞	PWM 0-10v

