

Unilumin

LED

Outdoor Lighting



Unilumin

TOGETHER, FOR A BRIGHTER FUTURE

UNILUMIN GROUP CO., LTD

HQ Address: No. 18 Haoye Road, Fuhai Sub-district, Bao'an District Shenzhen, Guangdong Province, China

Manufacturing Base: No.105 Zhongnan Avenue, Minmin Town, Zhongshan, Guangdong Province, China

TEL: +86-0755-29918999 | FAX: +86-0755-29912092 | E-mail: ledlighting@unilumin.com

www.unilumin.com | www.unilumin-lighting.com

The product designs and specifications are subject to change without prior notice.
All rights reserved, copy is prohibited without the permission of Unilumin Group Co., Ltd.



Official Website



Facebook



Twitter



LinkedIn



Instagram

Published: August 2025





TOGETHER,
FOR A BRIGHTER FUTURE

Contents

① About Unilumin 01-04

② Road & Urban Lighting Soluiton 05-30

| | | |
|-----------|-----------|-------------|
| Marlin | Beluga | Manta |
| Manta+ | Mola | Ecoluzia |
| Shark | SharkLite | Nano |
| NanoLite | Napro | Guppy |
| Ledolphin | Tuna | EconPlus II |
| EconPlus | EcoFlex | Orca |
| Carp II | Opera | Zeta |
| Villa | Beta | |

③ Solar Lighting Solution 31-48

| | |
|-----------------------------------|---------------------------------------|
| SunMaster ELite III | SunMaster ELite III Pro |
| SunMaster ELite II | SunMaster ELite II -Bot Self-cleaning |
| SunMaster Brite II High Power | Essential III Series (All in one) |
| Essential III Series (All in two) | Essential III Series (Floodlight) |
| Essential II Series (All in one) | Essential II Series (All in two) |
| Essential I Series (All in one) | Essential I Series (All in two) |
| Essential I Series (Floodlight) | SunMaster Split Light |

④ Large Area Lighting Solution 49-64

| | | |
|-----------|-----------------------|----------------------|
| GeniFlood | StarFlood III | ModuLux |
| Ares | Venus II (High Power) | Venus II (Low Power) |
| Unicorn | Hera II | MS-A |
| Bigeye | LumiBay | Edge II |
| Ruby II | | |

⑤ Tunnel Lighting Solution 65-68

| | |
|-----------|-------------|
| Jade Moon | Linear Moon |
|-----------|-------------|

⑥ Guardrail Lighting Solution 69-74

| | | |
|-------------|--------------|-------------|
| Guardlite L | Guardlite LE | Guardlite S |
|-------------|--------------|-------------|

⑦ Smart City Solution 75-82

| |
|---------------------------|
| Smart Pole Introduction |
| Road Lighting Series |
| Landscape Lighting Series |



About Unilumin

Established in 2004, is a world-class LED lighting and display solution provider. As a key business of Unilumin Group, Unilumin Lighting has established a firm foothold in the LED lighting industry and has been a trusted global partner offering comprehensive lighting solutions and exceptional customer service. Our relentless dedication to R&D and customer satisfaction has positioned Unilumin as a top LED lighting brand, known for our worldwide presence and core competitive edges.

Why Choose Unilumin

-  **18** Years of Outdoor Lighting Expertise
-  ISO/IEC 17025 Accredited LAB & Precise Automatic Production
-  Flexible Customization Services
-  Recognized by Clients in Over **80** Countries

ISO/IEC 17025 Accredited LAB

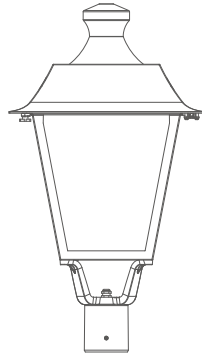
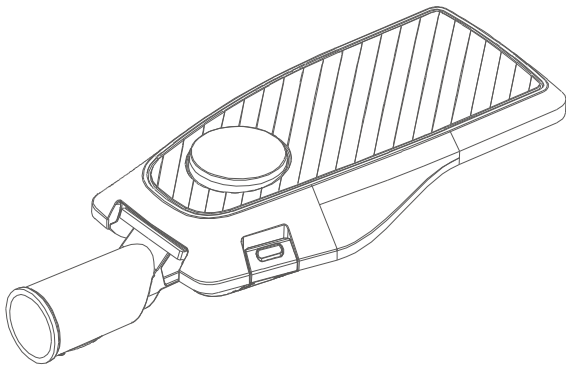
The central laboratory of Unilumin has been recognized by CNAS (code L6507), which means it is an ISO/IEC 17025 accredited laboratory and also has international qualifications such as SGS, TUV-SUD, TUV Rheinland, UL-WTDP, and so on, which ensures reliable testing data for the design, development, and verification of LED products in the early stages as well as quality assurance for mass production, and also provides the same service to external partners, thus becoming an industry-shared testing platform.



Production Line

Unilumin possesses a team of skilled R&D professionals and operates advanced automated production systems. With significant investments, Unilumin has imported and established state-of-the-art production lines. These include high-speed SMT module lines, automatic assembly production systems, waterproof testing facilities, aging lines for LED outdoor lighting, LED DOB modules, and automated glue pouring lines. Our production capabilities showcase our commitment to delivering cutting-edge solutions.

Road & Urban Lighting



Unilumin road and urban lighting solutions and products can deliver energy-efficient, high-quality illumination that enhances safety, security, and the aesthetic appeal of public spaces. Support for customized designs helps create bright, sustainable environments that meet your unique needs while reducing costs.



Enhances safety and aesthetic
with energy-efficiency



Marlin Series

Features & Benefits

- 1. Die-casting aluminum housing, special oxidation and excellent thermal performance, corrosion resistance, anti-aging, and longer life span
- 2. Utilize a modular, tool-free design for easy replacement, reducing costs
- 3. Supports NEMA and ZHAGA standards interfaces for smart control
- 4. Includes toughened glass, PMMA lenses, and top-tier light sources for superior lighting
- 5. Equipped with an adapter, allowing wide-angle adjustment (±20°) during installation for flexible optical adjustments
- 6. Internal lightning protection and external 10KV/20KV surge protectors provide dual-wave surge protection

| Product Model | UNI-STD3-1-030 | UNI-STD3-2-060 | UNI-STD3-3-090 | UNI-STD3-4-120 | UNI-STD3-5-150 |
|-------------------|----------------------------------|----------------|----------------|----------------|----------------|
| Input Voltage | AC100-277V | | | | |
| Power(W) | 35 | 60 | 90 | 120 | 150 |
| Luminous Efficacy | 160-170lm/W | | | | |
| Luminous Flux(lm) | 6300 | 10500 | 16800 | 25200 | 33600 |
| CCT | 2200K/2700K/3000/4000/5000/5700K | | | | |



Beluga Series

Features & Benefits

- 1. Die-casting aluminum housing, special oxidation and excellent thermal performance, corrosion resistance, anti-aging, and longer life span
- 2. Innovative detachable solution for easy maintenance
- 3. Pioneering vertical plugged hinge facilitates safer maintenance
- 4. Side entry and post top optional with -20° to 15° tilt steps
- 5. Φ42, 60, 76mm spigots are optional
- 6. Automatic power-off switch to ensure safe installation and maintenance
- 7. Future-proof and smart-ready with NEMA and Zhaga controls

| Product Model | Micro UNI-STB1-1 | Mini UNI-STB1-2/3 | Midi UNI-STB1-4/5 | Maxi UNI-STB1-6/7 | Maxi Plus UNI-STB1-8/9 |
|-------------------|---|-------------------|-------------------|-------------------|------------------------|
| Input Voltage | AC100-277V 50/60Hz | | | | |
| Power(W) | 15-45 | 60-90 | 90-120 | 150-200 | 200-300 |
| Luminous Efficacy | 125-150lm/W | | | | |
| Luminous Flux(lm) | 1875-6750 | 7500-13500 | 11250-18000 | 18750-30000 | 25000-45000 |
| CCT | 2200K/2700K/3000K/4000K/5000K/5700K/6500K | | | | |



Manta Series

The Winner of DFA Gold Award 2022



Manta Series

Features & Benefits

1. Die-casting aluminum housing, special oxidation and excellent thermal performance, corrosion resistance, anti-aging, and longer life span
2. Easy maintenance with tool-free replacement of optical compartment and electrical module
3. -20° to +15° tilt steps for easy and quick on-site optical compartment adjustment
4. Pleasing and proven product design for a better city image
5. Future-proof and smart-ready with NEMA and Zhaga interfaces
6. Compatible with both post top and side entry installations
7. Φ42, 60, 76mm spigots are optional
8. Bubble level for easier installation

| Product Model | Micro UNI-STC3-1 | Mini UNI-STC3-2/3 | Midi UNI-STC3-4 | Maxi UNI-STC3-5 |
|-------------------|-------------------------------|----------------------|--------------------|--------------------|
| Input Voltage | AC100-277V 50/60Hz | | | |
| Power(W) | 20-60 | 60-90 | 120-150 | 180-240 |
| Luminous Efficacy | 130-160lm/W | | | |
| Luminous Flux(lm) | 2600-9600 | 7800-14400 | 15600-24000 | 23400-38400 |
| CCT | 3000K/4000K/5000K/5700K/6500K | | | |



Manta+ Series

Features & Benefits

1. Die-casting aluminum housing, special oxidation and excellent thermal performance, corrosion resistance, anti-aging, and longer life span
2. Easy maintenance with tool-free replacement of optical compartment and electrical module
3. Supports adjustable installation angles: ±15° horizontal and vertical
4. Pleasing and proven product design for a better city image
5. Future-proof and smart-ready with NEMA and Zhaga interfaces
6. Compatible with both post top and side entry installations
7. Φ60, 76mm spigots are optional
8. Equipped with automatic power-off switch to ensure safe installation and maintenance

| Product Model | UNI-STC3-6-350 |
|-------------------|-------------------------------|
| Input Voltage | AC100-277V 50/60Hz |
| Power(W) | 350 |
| Luminous Efficacy | 175lm/W @4000K Tq=25° |
| Luminous Flux(lm) | 56000 |
| CCT | 3000K/4000K/5000K/5700K/6500K |

Mola Series

Features & Benefits

- 1. Features die-cast aluminum housing and ultra-transparent full-page tempered glass
- 2. Designed with a down-opening cover for easy access
- 3. Rated IP66 waterproof and IK08 impact resistant
- 4. Supports ±15° horizontal and vertical angle adjustment in 5° increments
- 5. Offers optional NEMA and ZHAGA interfaces for smart control
- 6. Supports power line communication control mode
- 7. Fits Φ60mm pole diameter

| Product Model | UNI-STF4-1 | UNI-STDF4-2 | UNI-STDF4-2 | UNI-STDF4-3 | UNI-STDF4-3 |
|-------------------|-------------------------------|-------------|-------------|-------------|-------------|
| Input Voltage | AC200-240V 50/60Hz | | | | |
| Power(W) | 30 | 60 | 90 | 120 | 150 |
| Luminous Efficacy | 160lm/W | | | | |
| Luminous Flux(lm) | 4800 | 9600 | 14400 | 19200 | 24000 |
| CCT | 3000K/4000K/5000K/5700K/6500K | | | | |

Ecoluzia Series

Features & Benefits

- 1. Die-cast aluminum housing with integrated full-piece PC lens
- 2. Down-opening cover design
- 3. IP66 waterproof and IK08 impact resistant
- 4. ±15° horizontal and vertical angle adjustment in 5° increments
- 5. Optional NEMA interface for smart control
- 6. Compatible with Φ60mm pole diameter

| Product Model | UNI-STF3-1-20 | UNI-STDF3-2-40 | UNI-STDF3-3-60 | UNI-STDF3-4-100 | UNI-STDF3-5-150 | UNI-STDF3-5-200 |
|-------------------|-------------------------------|----------------|----------------|-----------------|-----------------|-----------------|
| Input Voltage | AC100-277V 50/60Hz | | | | | |
| Power(W) | 20 | 40 | 60 | 100 | 150 | 200 |
| Luminous Efficacy | 190lm/W | | | | | |
| Luminous Flux(lm) | 3800 | 7600 | 11400 | 19000 | 28500 | 38000 |
| CCT | 3000K/4000K/5000K/5700K/6500K | | | | | |

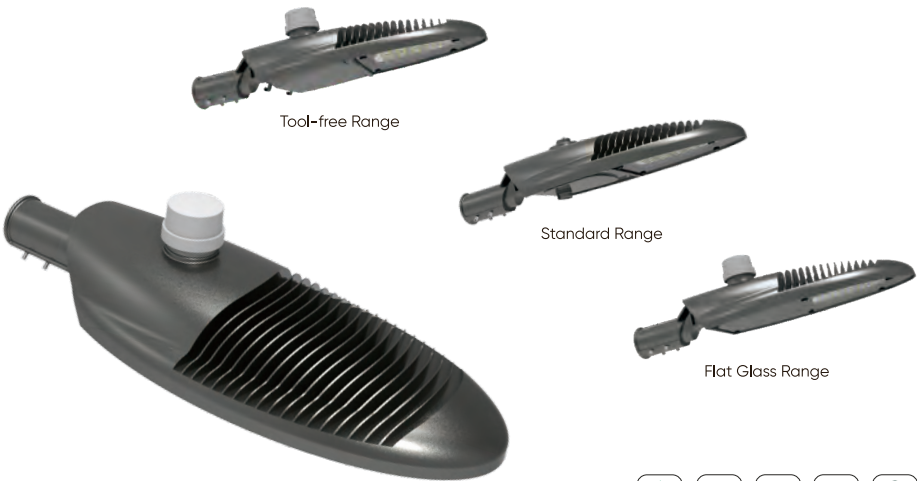


Shark Series

Features & Benefits

- 1. Streamlined and robust design style for a better city image
- 2. Die-casting aluminum housing for high stability and good heat dissipation
- 3. Easy maintenance with tool-free open clip design
- 4. Camber upper cover design prevents the accumulation of snow, dust, etc
- 5. Smart ready with NEMA and Zhaga interface alternatives
- 6. Equipped with automatic power-off switch to ensure safe installation and maintenance

| Product Model | Mini UNI-STA3-1 | Midi UNI-STA3-2 | Maxi UNI-STA3-3 |
|-------------------|-------------------------------|--------------------|--------------------|
| Input Voltage | AC100-277V 50/60Hz | | |
| Power(W) | 35-60 | 90-120 | 150-240 |
| Luminous Efficacy | 125-150lm/W | | |
| Luminous Flux(lm) | 4375-9000 | 11250-18000 | 18750-36000 |
| CCT | 3000K/4000K/5000K/5700K/6500K | | |



SharkLite Series

Features & Benefits

- 1. Die-casting aluminum housing, robust and durable
- 2. Complete front glass cover type or flat glass type with driver compartment door are available
- 3. Future-proof and smart ready with NEMA and Zhaga interface alternatives
- 4. Standard and tool-free versions are available
- 5. Pleasing and proven product design for a better city image
- 6. Compatible with both post top and side entry installations
- 7. -20° to +15° tilt steps for easy and quick on-site optical compartment adjustment

| Product Model | Micro UNI-STB7-1 | Mini UNI-STB7-2 | Midi UNI-STB7-3 |
|-------------------|---|--------------------|--------------------|
| Input Voltage | AC100-277V 50/60Hz | | |
| Power(W) | 20-60 | 60-100 | 120-150 |
| Luminous Efficacy | 130-150lm/W | | |
| Luminous Flux(lm) | 2600-9000 | 7800-15000 | 15600-22500 |
| CCT | 2200K/2700K/3000K/4000K/5000K/5700K/6500K | | |



Nano Series

Features & Benefits

- 1. Cost effective with high luminaire efficacy up to 150lm/w enabling fast payback
- 2. Wide power ranging from 15-300W with 5 size available
- 3. Die-casting aluminum housing, robust and durable
- 4. PC cover and glass cover are optional
- 5. Excellent thermal management design ensures better performance
- 6. Future-proof and smart ready with NEMA interface alternative
- 7. Compatible with both post top and side entry installations
- 8. Excellent photometric performance with diverse lenses available

| Product Model | Micro UNI-STA7-0 | Mini UNI-STA7-1 | Mini Plus UNI-STA7-4 | Midi UNI-STA7-3 | Maxi UNI-STA7-5 |
|-------------------|-------------------------------|--------------------|-------------------------|--------------------|--------------------|
| Input Voltage | AC100-277V 50/60Hz | | | | |
| Power(W) | 15-40 | 50-60 | 70-100 | 120-150 | 180-300 |
| Luminous Efficacy | 130-150lm/W | | | | |
| Luminous Flux(lm) | 1950-6000 | 6500-9000 | 9100-15000 | 15600-22500 | 23400-45000 |
| CCT | 3000K/4000K/5000K/5700K/6500K | | | | |

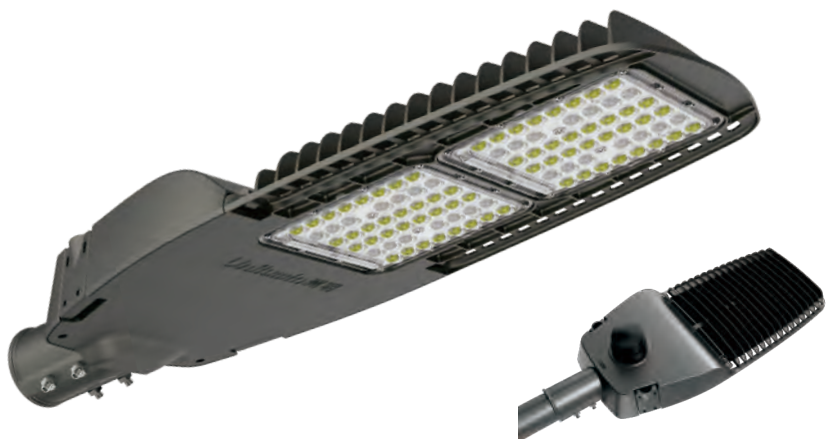


NanoLite Series

Features & Benefits

- 1. Die-casting aluminum housing, special oxidation and excellent thermal performance, corrosion resistance, anti-aging, and longer life span
- 2. With built-in 5-degree tilt steps, -5° / 0° / +5° field adjustable
- 3. Highly efficient with 160lm/W luminous efficacy
- 4. Compact design, save more space and shipping costs
- 5. Precise and multiple highly-yield optical lenses cater to extensive applications

| Product Model | Micro UNI-STC5-1 | Mini UNI-STC5-2 | Mini plus UNI-STC5-3 | Midi UNI-STC5-4 | Maxi UNI-STC5-5 |
|-------------------|-------------------------|--------------------|-------------------------|--------------------|--------------------|
| Input Voltage | AC100-277V 50/60Hz | | | | |
| Power(W) | 20-30 | 40-60 | 80 | 90-120 | 150-200 |
| Luminous Efficacy | 130-160lm/W | | | | |
| Luminous Flux(lm) | 2600-4800 | 5200-9600 | 10400-12800 | 11700-19200 | 19500-32000 |
| CCT | 3000K/4000K/5000K/5700K | | | | |



Napro Series

Features & Benefits

1. Cost effective with high luminaire efficacy up to 170lm/W enabling fast payback
2. Tool-free top cover design for easy maintenance
3. Die-casting aluminum alloy housing, robust and durable
4. Optical-grade PC lens with 5-year anti-yellowing durability
5. Professional road-specific light distribution for enhanced lighting efficiency
6. Top-mounted 7-pin NEMA socket compatible with various smart control systems
7. Unique anti-glare design for premium light output

| Product Model | | UNI-STD2-2 | | UNI-STD2-3 | |
|--------------------------------|-----------|--------------------------------|------------|-------------|-------------|
| Input Voltage | | AC100-277V 50/60Hz | | | |
| Power(W) | 20 | 40 | 60 | 80 | 100 |
| Luminous Efficacy | | 3030: 130lm/W 5050: 170lm/W | | | |
| Luminous Flux(lm) 3030/5050 | 2600/3400 | 5200/6800 | 7800/10200 | 10400/13600 | 13000/17000 |
| CCT | | 3000K/4000K/5000K/5700K/6500K | | | |



Guppy Series

Features & Benefits

1. Designed to be recyclable for circular economy
2. Standard and tool-free ranges are optional
3. Superior thermal performance with airflow between heat sink ribs
4. Future-proof and smart-ready with NEMA and Zhaga interface alternatives
5. Compatible with both post top and side entry installations
6. -20° to 15° tilt steps for easy and quick on-site optical compartment adjustment
7. Bubble level for easier installation

| Product Model | Micro | Mini | Mini Plus | Midi | Maxi |
|-------------------|---------------|---|---------------|---------------|---------------|
| | UNI-STB8-1/1A | UNI-STB8-2/2A | UNI-STB8-3/3A | UNI-STB8-4/4A | UNI-STB8-5/5A |
| Input Voltage | | AC100-277V 50/60Hz | | | |
| Power(W) | 20-50 | 50-80 | 80-120 | 120-150 | 150-200 |
| Luminous Efficacy | | 130-150lm/W | | | |
| Luminous Flux(lm) | 2600-7500 | 6500-12000 | 10400-18000 | 15600-22500 | 19500-30000 |
| CCT | | 2200K/2700K/3000K/4000K/5000K/5700K/6500K | | | |



Ledolphin Series

Features & Benefits

- 1. Stylish streamlined design for better city image
- 2. Die-casting aluminum housing for high stability and good heat dissipation
- 3. -15°to +15°tilt steps for easy and quick on-site optical compartment adjustment
- 4. Smart ready with NEMA and Zhaga interface alternatives
- 5. Equipped with automatic power-off switch to ensure safe installation and maintenance
- 6. Equipped with bubble level to ensure quick installation

| Product Model | Micro UNI-STA8-1 | Mini UNI-STA8-2 | Midi UNI-STA8-3 | Maxi UNI-STA8-4 |
|-------------------|-------------------------------|--------------------|--------------------|--------------------|
| Input Voltage | AC100-277V 50/60Hz | | | |
| Power(W) | 15-45 | 60 | 90-120 | 150-200 |
| Luminous Efficacy | 125-150lm/W | | | |
| Luminous Flux(lm) | 1875-6750 | 7500-9000 | 11250-18000 | 18750-30000 |
| CCT | 3000K/4000K/5000K/5700K/6500K | | | |



Tuna Series

Features & Benefits

- 1. Cost effective with high luminaire efficacy up to 155lm/w enabling fast payback
- 2. Standard and tool-free range
- 3. Quick tool-free latch access to the driver compartment for easy maintenance
- 4. Future-proof and smart ready with NEMA & Zhaga interface alternative
- 5. Excellent thermal management design ensures better performance
- 6. Compatible with both post top and side entry installations
- 7. -20°to + 15°tilt steps for easy and quick on-site optical compartment adjustment
- 8. Built-in bubble level for easy installation

| Product Model | Micro UNI-STB9-1 | Mini UNI-STB9-2 | Mini Plus UNI-STB9-3 | Midi UNI-STB9-4 | Maxi UNI-STB9-5 |
|-------------------|-------------------------------|--------------------|-------------------------|--------------------|--------------------|
| Input Voltage | AC100-277V 50/60Hz | | | | |
| Power(W) | 20-40 | 50-75 | 90-120 | 150 | 180-200 |
| Luminous Efficacy | 125-155lm/W | | | | |
| Luminous Flux(lm) | 2500-6200 | 6250-11625 | 11250-18600 | 18750-23250 | 22500-31000 |
| CCT | 3000K/4000K/5000K/5700K/6500K | | | | |



EconPlus II Series

Features & Benefits

- 1. Die-casting aluminum housing, robust and durable
- 2. Optimized thermal management with special structure design
- 3. Uv-stabilized polycarbonate cover for clear anti-yellow lighting
- 4. Compact design to save shipping and storage costs
- 5. Side-entry installation on Φ 48, Φ 60mm poles available
- 6. Easy to disassemble, repair and replace

| Product Model | Mini UNI-STC9-1 | Midi UNI-STC9-3 |
|-------------------|--------------------|--------------------|
| Input Voltage | AC100-277V 50/60Hz | |
| Power(W) | 20-50 | 60-100 |
| Luminous Efficacy | 130lm/W | |
| Luminous Flux(lm) | 2600-6500 | 7800-13000 |
| CCT | 4000K/5000K | |

EconPlus Series

Features & Benefits

- 1. Die-casting aluminum housing, robust and durable
- 2. Optimized thermal management
- 3. Precise optical lens cater to extensive applications
- 4. Accessories available for various mounting options
- 5. Easy to disassemble, repair and replace

| Product Model | Mini UNI-STB5-1 | Mini UNI-STB5-1 | Midi UNI-STB5-2 | Midi UNI-STB5-2 |
|-------------------|-------------------------------|--------------------|--------------------|--------------------|
| Input Voltage | AC100-277V 50/60Hz | | | |
| Power(W) | 20 | 30 | 40 | 50 |
| Luminous Efficacy | 125lm/W | | | |
| Luminous Flux(lm) | 2500 | 3750 | 5000 | 6250 |
| CCT | 3000K/4000K/5000K/5700K/6500K | | | |



EcoFlex Series

Features & Benefits

- 1. Integrated die-casting design, reliable and robust
- 2. -20°to +15°tilt steps for easy and quick on-site optical compartment adjustment
- 3. Additional weeping holes avoid water accumulation
- 4. Excellent thermal management design for stable operation
- 5. Easy to disassemble, repair and replace

| Product Model | UNI-STB3-0 | UNI-STB3-1 | UNI-STB3-2 | UNI-STB3-3 | UNI-STB3-4 | UNI-STB3-5 |
|-------------------|-------------------------------|------------|-------------|-------------|-------------|-------------|
| Input Voltage | AC100-277V 50/60Hz | | | | | |
| Power(W) | 40 | 60 | 80 | 120 | 160 | 210 |
| Luminous Efficacy | 130-150lm/W | | | | | |
| Luminous Flux(lm) | 5200-6000 | 7800-9000 | 10400-12000 | 15600-18000 | 20800-24000 | 27300-31500 |
| CCT | 3000K/4000K/5000K/5700K/6500K | | | | | |



Orca Series

Features & Benefits

- 1. Die-casting aluminum housing, special oxidation and excellent thermal performance, corrosion resistance, anti-aging, and longer life span
- 2. Cost effective with high luminaire efficacy up to 180lm/w enabling fast payback
- 3. Supports NEMA standards interfaces for smart control
- 4. Includes PC lenses and top-tier light sources for superior lighting
- 5. Internal lightning protection and external 10KV surge protectors provide dual-wave surge protection
- 6. Stylish streamlined design for better city image

| Product Model | UNI-STD2-1 | UNI-STD2-2 | UNI-STD2-3 | UNI-STD2-4 | UNI-STD2-5 |
|-------------------|----------------------|------------|------------|------------|------------|
| Input Voltage | AC100-277V | | | | |
| Power(W) | 30 | 60 | 100 | 150 | 200 |
| Luminous Efficacy | 180lm/W | | | | |
| Luminous Flux(lm) | 5400 | 10800 | 18000 | 27000 | 36000 |
| CCT | 3000/4000/5000/5700K | | | | |



Carp II Series

Features & Benefits

- 1. Die-casting aluminum housing ensures high strength and wind resistance up to level 17
- 2. Optical PMMA lens and tempered glass, 10 years no yellowing
- 3. Innovative detachable solution for easy maintenance
- 4. Power 30W-200W, 20+ light options, covers 90%+ roads
- 5. High luminous efficiency, with overall lamp efficiency exceeding 160lm/W
- 6. Adaptable to a wide voltage range: AC100-277V, offering high compatibility
- 7. External angle adjuster allows for large angle adjustments during installation: 15° to -15°
- 8. Supports NEMA and ZHAGA interfaces for smart control

| Product Model | UNI-STD8 -1-030 | UNI-STD8 -1-060 | UNI-STD8 -1-075 | UNI-STD8 -2-090 | UNI-STD8 -3-150 | UNI-STD8 -4-200 |
|-------------------|-------------------------|--------------------|--------------------|--------------------|--------------------|--------------------|
| Input Voltage | AC100-277V | | | | | |
| Power(W) | 30 | 60 | 75 | 90 | 150 | 200 |
| Luminous Efficacy | 160lm/W | | | | | |
| Luminous Flux(lm) | 4800 | 9600 | 12000 | 14400 | 24000 | 32000 |
| CCT | 3000K/4000K/5000K/5700K | | | | | |



Opera Series

Features & Benefits

- 1. Stylish design, enhance the charm and competitiveness of cities
- 2. Die-casting aluminum housing, reliable and robust
- 3. Diverse mounting methods for more applications
- 4. High flexibility with various light distribution options
- 5. Efficient heat sink structure design, more stable
- 6. Easy to disassemble, repair and replace

| Product Model | UNI-YA03-1 | | | | | |
|-------------------|-------------------------------|-----------|-----------|-----------|-----------|------------|
| Input Voltage | AC100-277V 50/60Hz | | | | | |
| Power(W) | 18 | 25 | 35 | 45 | 65 | 80 |
| Luminous Efficacy | 110-150lm/W | | | | | |
| Luminous Flux(lm) | 1980-2700 | 2750-3750 | 3850-5250 | 4950-6750 | 7150-9750 | 8800-12000 |
| CCT | 3000K/4000K/5000K/5700K/6500K | | | | | |



Zeta Series

Features & Benefits

1. Parabolic appearance design, with design patent, enhance the charm of cities
2. Aluminum alloy + tempered glass shell, reliable and robust
3. Multiple mounting options for more lighting applications
4. Supports NEMA, ZHAGA interfaces and a variety of intelligent lighting controls
5. Integrated die-cast heat dissipation design for higher heat dissipation efficiency
6. Tool-free opening and maintenance, more convenient and faster
7. Professional roadway light distribution design to provide more perfect lighting performance

| Product Model | UNI-YA06-1 (Post top mounting) | | | | UNI-YA06-2 (Mast arm mounting) | | | |
|-------------------|--------------------------------|------|------|-------|--------------------------------|------|------|-------|
| Input Voltage | AC100-277V 50/60Hz | | | | | | | |
| Power(W) | 20 | 40 | 60 | 80 | 20 | 40 | 60 | 80 |
| Luminous Efficacy | 145lm/W | | | | 160lm/W | | | |
| Luminous Flux(lm) | 2900 | 5800 | 8700 | 11600 | 3200 | 6400 | 9600 | 12800 |
| CCT | 3000K/4000K/5000K | | | | | | | |



Villa Series

Features & Benefits

1. Stylish and elegant design for better image
2. Mast arm & Post top mounting optional
3. Tool-free access realizes easy and fast maintenance
4. More sustainable with smart controls
5. Versatile optics options for more applications

| Product Model | UNI-YA05-1 | | | | | | | |
|-------------------|-------------------------------|-----------|-----------|-----------|-----------|-----------|-------------|--|
| Input Voltage | AC100-277V 50/60Hz | | | | | | | |
| Power(W) | 20 | 30 | 40 | 50 | 60 | 70 | 80 | |
| Luminous Efficacy | 125-135lm/W | | | | | | | |
| Luminous Flux(lm) | 2500-2700 | 3750-4050 | 5000-5400 | 6250-6750 | 7500-8100 | 8750-9450 | 10000-10800 | |
| CCT | 3000K/4000K/5000K/5700K/6500K | | | | | | | |



Beta Series

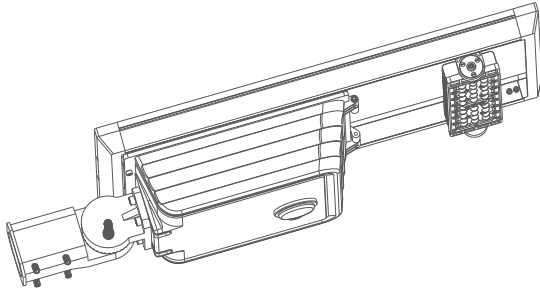
Features & Benefits

- 1. Effortless installation and maintenance
- 2. Enhanced aesthetic with a sleek and elegant design
- 3. Exceptional heat dissipation for reliable performance
- 4. More sustainable with smart controls
- 5. Versatile optics options for more applications

| Product Model | | UNI-YA04-1 | | | | | |
|-------------------|--|-------------------------------|-----------|-----------|-----------|-----------|------------|
| Input Voltage | | AC100-277V 50/60Hz | | | | | |
| Power(W) | | 15 | 25 | 35 | 45 | 60 | 80 |
| Luminous Efficacy | | 110-125lm/W | | | | | |
| Luminous Flux(lm) | | 1650-1875 | 2750-3125 | 3850-4375 | 4950-5625 | 6600-7500 | 8800-10000 |
| CCT | | 3000K/4000K/5000K/5700K/6500K | | | | | |



Solar Lighting Solution



Unilumin solar lighting solutions provide reliable and sustainable lighting for a variety of outdoor spaces, including streets, parks, islands, and parking lots. Our innovative solar technology reduces energy costs and carbon emissions while enhancing visibility and security. With customizable designs and easy installation, our solar lighting solutions offer a hassle-free and cost-effective way to brighten up your outdoor environment.



Reduces energy costs and
carbon emissions



SunMaster ELite III Series

Features & Benefits

- 1. Highly efficient with 210lm/W efficacy
- 2. Intelligent charge and discharge management, 365 day light, 1~2 overcast days autonomy
- 3. High-quality monocrystalline solar panel
- 4. LiFePO₄ battery with 2000 lifecycles
- 5. Easy access to battery compartment
- 6. Equipped with microwave radar or infrared sensors as standard
- 7. ±60° optical module mounting angles adjustable

| Product Model | UNI-SL05 -1-20 | UNI-SL05 -2-30 | UNI-SL05 -3-40 | UNI-SL05 -4-50 | UNI-SL05 -5-60 | UNI-SL05 -6-80 | UNI-SL05 -7-100 |
|-----------------------------|---------------------------------|-------------------|-------------------|-------------------|-------------------|-------------------|--------------------|
| System Voltage | 12V | 12V | 12V | 12V | 12V | 12V | 24V |
| Monocrystalline Solar Panel | 40W/18V | 40W/18V | 60W/18V | 60W/18V | 80W/18V | 100W/18V | 120W/36V |
| LiFePO ₄ Battery | 12.8V/15AH | 12.8V/15AH | 12.8V/30AH | 12.8V/30AH | 12.8V/45AH | 12.8V/60AH | 25.6V/30AH |
| System Power (W) | 20 | 30 | 40 | 50 | 60 | 80 | 100 |
| Luminous Efficacy | 210lm/W@4000K | | | | | | |
| Luminous Flux(lm) | 4200 | 6300 | 8400 | 10500 | 12600 | 16800 | 21000 |
| CCT | 4000K (3000K/4000K/5000K/6500K) | | | | | | |



SunMaster ELite III Pro Series

Features & Benefits

- 1. High quality aluminum housing, robust and durable
- 2. Various optical lenses available for flexible lighting options
- 3. Intelligent charge and discharge management, 365 day light, 2 overcast days autonomy
- 4. Highly quality monocrystalline solar panel
- 5. Optional intelligent 4G/Lora remote control solution
- 6. Adjustable elevation angle of lamp: ±40°
- 7. Easy access to battery compartment

| Product Model | UNI-SL04 -1-60 | UNI-SL04 -2-80 | UNI-SL04 -3-100 | UNI-SL04 -4-120 | UNI-SL04 -5-150 | UNI-SL04 -6-180 |
|-----------------------------|-------------------------|-------------------|--------------------|--------------------|--------------------|--------------------|
| System Voltage | 12V | 12V | 24V | 24V | 24V | 24V |
| Monocrystalline Solar Panel | 120W/18V | 160W/18V | 200W/36V | 240W/36V | 300W/36V | 360W/36V |
| LiFePO ₄ Battery | 12.8V/90AH | 12.8V/120AH | 25.6V/75AH | 25.6V/90AH | 25.6V/120AH | 25.6V/135AH |
| System Power (W) | 60 | 80 | 100 | 120 | 150 | 180 |
| Luminous Efficacy | 210lm/W@4000K | | | | | |
| Luminous Flux(lm) | 12600 | 16800 | 25200 | 25200 | 31500 | 37800 |
| CCT | 3000K/4000K/5700K/6500K | | | | | |



SunMaster ELite II Series

Features & Benefits

1. No cabling, trenching, or metering required
2. Highly efficient with 180-200lm/W
3. Die-casting aluminum housing, robust and durable
4. Deep discharge LiFePO4 battery with 2000 lifecycles, safe and reliable
5. High-quality monocrystalline solar panel
6. 2-3 overcast days' autonomy, solar and hybrid options
7. Smooth surface design reduces debris and self-cleaning under rainy weather
8. Easy access to battery compartment for easy maintenance
9. Post top and side entry optional with $\Phi 60$ and 76mm spigot alternatives
10. $\pm 75^\circ$ adjustable LED module, $-90^\circ \sim +70^\circ$ luminaire mounting angles adjustable
11. Coupled with motion sensor for longer working hours
12. Dimming profile can be reconfigured through remote controller

Battery & AC Main Version

| Product Model | UNI-SL01-1H-020 | UNI-SL01-1H-030 | UNI-SL01-1H-040 | UNI-SL01-1H-050 | UNI-SL01-1H-060 | UNI-SL01-1H-080 | UNI-SL01-1H-090 |
|---|-------------------------------------|-----------------|-----------------|-----------------|-----------------|-----------------|-----------------|
| System Voltage | 12V | 12V | 12V | 24V | 24V | 24V | 24V |
| Monocrystalline Solar Panel | 40W/18V | 40W/18V | 50W/18V | 60W/36V | 80W/36V | 100W/36V | 120W/36V |
| LiFePO4 Battery | 12.8V/15AH | 12.8V/18AH | 12.8V/24AH | 25.6V/15AH | 25.6V/18AH | 25.6V/24AH | 25.6V/36AH |
| System Power (W) | 20 | 30 | 40 | 50 | 60 | 80 | 90 |
| Hybrid | Battery & AC Main | | | | | | |
| AC Input Voltage | 100-240Vac 50/60Hz | | | | | | |
| Luminaire Efficacy at Battery Mode(Tq=25°C) | 180-200lm/W | | | | | | |
| Luminous Flux(lm) | 3600-4000 | 5400-6000 | 7200-8000 | 9000-10000 | 10800-12000 | 14400- 16000 | 16200-18000 |
| Efficacy at AC Main Mode(Tq=25°C) | 155lm/W | 155lm/W | 155lm/W | 155lm/W | 160lm/W | 160lm/W | 160lm/W |
| Lumen at AC Main model (lm) | 3100 | 4650 | 6200 | 7750 | 9600 | 12800 | 14400 |
| CCT | 3000K/3500K/4000K/5000K/5700K/6500K | | | | | | |

Battery Version

| Product Model | UNI-SL01-1-020 | UNI-SL01-1-030 | UNI-SL01-1-040 | UNI-SL01-1-050 | UNI-SL01-1-060 | UNI-SL01-1-080 | UNI-SL01-1-090 |
|---|-------------------------------------|----------------|----------------|----------------|----------------|----------------|----------------|
| System Voltage | 12V | 12V | 12V | 12V | 12V | 12V | 24V |
| Monocrystalline Solar Panel | 40W/18V | 40W/18V | 50W/18V | 60W/18V | 80W/18V | 100W/18V | 120W/36V |
| LiFePO4 Battery | 12.8V/15AH | 12.8V/15AH | 12.8V/30AH | 12.8V/30AH | 12.8V/45AH | 12.8V/60AH | 25.6V/30AH |
| System Power (W) | 20 | 30 | 40 | 50 | 60 | 80 | 90 |
| Hybrid | Battery | | | | | | |
| Luminaire Efficacy at Battery Mode(Tq=25°C) | 180-200lm/W | | | | | | |
| Luminous Flux(lm) | 3600-4000 | 5400-6000 | 7200-8000 | 9000-10000 | 10800-12000 | 14400- 16000 | 16200-18000 |
| CCT | 3000K/3500K/4000K/5000K/5700K/6500K | | | | | | |



SunMaster ELite II-Bot Self-cleaning Series

Features & Benefits

1. High-strength aluminum alloy construction, robust and reliable
2. Various optical lenses available for flexible lighting options
3. 2~3 overcast days' autonomy for uninterrupted lighting
4. Patented self-cleaning function reduces maintenance demands
5. Compatible with Photocontrol, PIR/Microwave control
6. Post-top and side entry installation options
7. Remote control for easy adjustment of working modes

| Product Model | UNI-SL02-1-030 | UNI-SL02-1-050 | UNI-SL02-1-080 |
|-----------------------------|-------------------------------------|----------------|----------------|
| System Voltage | 12V | 24V | 24V |
| Monocrystalline Solar Panel | 50W/18V | 80W/36V | 120W/36V |
| LiFePO4 Battery | 12.8V/24AH | 25.6V/18AH | 25.6V/30AH |
| System Power (W) | 30 | 50 | 80 |
| Luminous Efficacy | 180lm/W | | |
| Luminous Flux(lm) | 5400 | 9000 | 14400 |
| CCT | 3000K/3500K/4000K/5000K/5700K/6500K | | |



SunMaster Brite II High Power Series

Features & Benefits

1. High-strength aluminum alloy construction, robust and reliable
2. Wind-resistant up to 130km/h, high structural integrity
3. High-efficient monocrystalline silicon solar panels for fast-charging
4. LiFePO4 battery for longer service life, safety, and stability
5. Intelligent charge and discharge management
6. Various optical lenses are available
7. Remote control for easy adjustment of working modes

| Product Model | UNI-SL03-1-60 | UNI-SL03-2-80 | UNI-SL03-3-100 | UNI-SL03-4-120 |
|-----------------------------|-------------------------------------|---------------|----------------|----------------|
| System Voltage | 12V | 24V | 24V | 24V |
| Monocrystalline Solar Panel | 150W/18V | 180W/36V | 210W/36V | 240W/36V |
| LiFePO4 Battery | 12.8V/90AH | 25.6V/60AH | 25.6V/80AH | 25.6V/90AH |
| System Power (W) | 60 | 80 | 100 | 120 |
| Luminous Efficacy | >150lm/W | | | |
| Luminous Flux(lm) | 9000 | 12000 | 15000 | 18000 |
| CCT | 3000K/3500K/4000K/5000K/5700K/6500K | | | |



Essential III Series (All in one)

Features & Benefits

1. Solar-powered lighting delivering bright, reliable illumination without wiring or extra energy costs
2. Built-in battery charged by the solar panel during the day
3. High-efficiency LED automatically lights up at night for long-range coverage
4. Easy to install and durable design
5. Eco-friendly and low-maintenance solution for sustainable outdoor lighting

| Product Model | UNI-SLEQ-1-10 | UNI-SLEQ-2-18 |
|-----------------------------|---------------|---------------|
| System Voltage | 5V | |
| Polycrystalline Solar Panel | 5V/18W | 5V/28W |
| LiFePO4 Battery | 15AH | 25AH |
| Service life | 50000h | |
| CRI(Ra) | Ra≥70 | |
| Luminous Flux(lm) | 1400-1600 | 2600-2800lm |
| CCT | 6000K-6500K | |



Essential III Series (All in two)

Features & Benefits

1. Solar-powered lighting providing bright, reliable illumination without wiring or extra energy costs
2. Built-in battery charged by the solar panel during the day
3. High-efficiency LED automatically lights up at night for long-range coverage
4. Easy installation and durable, long-lasting design
5. Eco-friendly and low-maintenance solution for sustainable outdoor lighting

| Product Model | UNI-SLER-1-12 | UNI-SLER-2-23 |
|-----------------------------|---------------|---------------|
| System Voltage | 6V | |
| Polycrystalline Solar Panel | 6V/25W | 6V/45W |
| LiFePO4 Battery | 15AH | 30AH |
| Service life | 50000h | |
| CRI(Ra) | Ra≥70 | |
| Luminous Flux(lm) | 1600-1800 | 3300-3500 |
| CCT | 6500K-7000K | |



Essential III Series (Floodlight)

Features & Benefits

- 1. Solar-powered lighting delivers bright, reliable illumination without wiring or extra energy costs
- 2. Built-in battery charges during the day via the solar panel
- 3. High-efficiency LED automatically lights at night for strong, long-range coverage
- 4. Simple to install with durable, long-lasting construction
- 5. Eco-friendly, low-maintenance solution for sustainable outdoor lighting

| Product Model | UNI-SLES-1-12 | UNI-SLES-2-20 |
|-----------------------------|---------------|---------------|
| System Voltage | 6V | |
| Polycrystalline Solar Panel | 6V/25W | 6V/45W |
| LiFePO4 Battery | 15AH | 30AH |
| Service Life | 50000h | |
| CRI(Ra) | Ra≥70 | |
| Luminous Flux(lm) | 1600-1800 | 2800-3000lm |
| CCT | 7000K-7500K | |



Essential II Series (All in one)

Features & Benefits

- 1. LiFePO₄ battery (2000 cycles) with smart charge/discharge
- 2. High-efficiency monocrystalline solar panel
- 3. Durable powder-coated SPCC housing, IP65 rated
- 4. Adjustable elevation angle 0°~+90°
- 5. 190-200lm/W with 4500-9000lm output and large luminous surface
- 6. Remote control modes, 3-year warranty

| Product Model | UNI-SLEP-1-23 | UNI-SLEP-1-30 | UNI-SLEP-2-45 |
|-----------------------------|---------------|---------------|---------------|
| System Voltage | 3.2V | | |
| Polycrystalline Solar Panel | 60W/5V | 60W/5V | 80W/5V |
| LiFePO4 Battery | 3.2V/75AH | 3.2V/105AH | 3.2V/135AH |
| Full Power Working Time (H) | 10.4 | 11 | 9.5 |
| Luminous Efficacy | 190~200lm/W | | |
| Luminous Flux(lm) | 4500 | 6000 | 9000 |
| CCT | 6500-7000K | | |



Essential II Series (All in two)

Features & Benefits

- 1. LiFePO₄ battery with intelligent charge/discharge, safe and reliable
- 2. High-quality polycrystalline solar panel for stable energy conversion
- 3. Die-cast aluminum housing with IP65 protection, strong and durable
- 4. 150–160lm/W efficiency with 2100–3200lm output
- 5. Remote control with reconfigurable working modes, 365-day lighting

| Product Model | UNI-SLEN-01500 | UNI-SLEN-02000 | UNI-SLEN-03000 | UNI-SLEN-04500 | UNI-SLEN-08000 |
|-----------------------------|-------------------------------|----------------|----------------|----------------|----------------|
| System Voltage | 3.2V | 3.2V | 3.2V | 3.2V | 12.8V |
| Polycrystalline Solar Panel | 20W/5V | 25W/5V | 40W/5V | 80W/5V | 100W/18V |
| LiFePO ₄ Battery | 3.2V/15AH | 3.2V/20AH | 3.2V/30AH | 3.2V/60AH | 12.8V/24AH |
| Luminous Efficacy | 160lm/W | 160lm/W | 160lm/W | 140lm/W | 140lm/W |
| Luminous Flux(lm) | 1500 | 2000 | 3000 | 4500 | 8000 |
| CCT | 3000K/4000K/5000K/5700K/6500K | | | | |



Essential I Series (All in one)

Features & Benefits

- 1. High-strength aluminum alloy construction, robust and reliable
- 2. Uniform light output with professional PC optical lenses
- 3. LiFePO₄ battery for longer service life, safety, and stability
- 4. Intelligent charge and discharge management
- 5. Compatible with sensor for more flexible working mode

| Product Model | UNI-SLEO-02000 | UNI-SLEO-03000 | UNI-SLEO-04500 |
|-----------------------------|-------------------------------|----------------|----------------|
| System Voltage | 3.2V | | |
| Monocrystalline Solar Panel | 25W/5V | 40W/5V | 80W/6V |
| LiFePO ₄ Battery | 3.2V/20AH | 3.2V/30AH | 3.2V/60AH |
| System Power (W) | 12.5 | 19 | 30 |
| Luminous Efficacy | 150lm/W~160lm/W | | |
| Luminous Flux(lm) | 2000 | 3000 | 4500 |
| CCT | 3000K/4000K/5000K/5700K/6500K | | |



Essential I Series (All in two)

Features & Benefits

1. High-strength aluminum alloy construction, robust and reliable
2. Uniform light output with professional PC optical lenses
3. LiFePO4 battery for longer service life, safety, and stability
4. Intelligent charge and discharge management
5. Optional sensor for more flexible working modes

| Product Model | UNI-SLEN-01500 | UNI-SLEN-02000 | UNI-SLEN-03000 | UNI-SLEN-04500 | UNI-SLEN-08000 |
|-----------------------------|-------------------------------|----------------|----------------|----------------|----------------|
| System Voltage | 3.2V | 3.2V | 3.2V | 3.2V | 12.8V |
| Monocrystalline Solar Panel | 20W/5V | 25W/5V | 40W/5V | 80W/5V | 100W/18V |
| LiFePO4 Battery | 3.2V/15AH | 3.2V/20AH | 3.2V/30AH | 3.2V/60AH | 12.8V/24AH |
| Luminous Efficacy | 160lm/W | 160lm/W | 160lm/W | 140lm/W | 140lm/W |
| Luminous Flux(lm) | 1500 | 2000 | 3000 | 4500 | 8000 |
| CCT | 3000K/4000K/5000K/5700K/6500K | | | | |



Essential I Series (Floodlight)

Features & Benefits

1. High-strength aluminum alloy construction, robust and reliable
2. Uniform light output with professional PC optical lenses
3. High-quality LEDs with up to 160lm/W luminous efficacy
4. LiFePO4 battery for longer service life, safety, and stability
5. Stylish and compact design
6. Mounting angle adjustable

| Product Model | UNI-PLE2-01500 | UNI-PLE2-02000 | UNI-PLE2-03000 |
|-----------------------------|-------------------------------|----------------|----------------|
| System Voltage | 3.2V | | |
| Monocrystalline Solar Panel | 20W/5V | 25W/5V | 40W/5V |
| LiFePO4 Battery | 3.2V/15AH | 3.2V/20AH | 3.2V/30AH |
| Luminous Efficacy | 160lm/W | | |
| Luminous Flux(lm) | 1500 | 2000 | 3000 |
| CCT | 3000K/4000K/5000K/5700K/6500K | | |



SunMaster Split Light

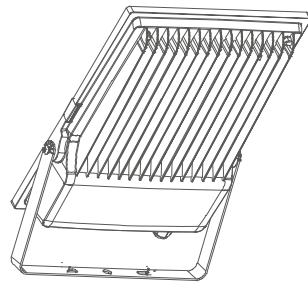
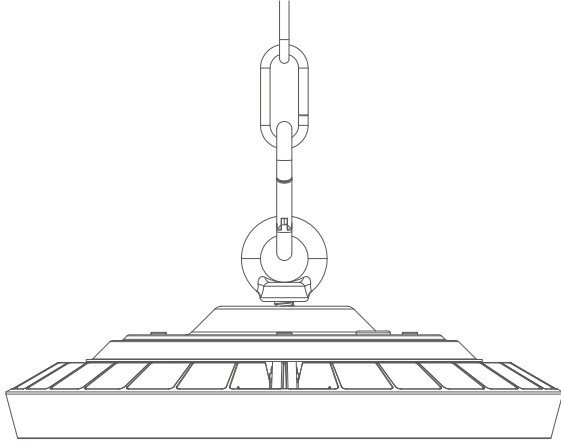
Features & Benefits

- 1. Designed to operate reliably and sustainably up to a 10-12 hours period
- 2. Designed autonomy for 5-7 overcast or rainy days to ensure its reliable light output at night time
- 3. Anti-theft design for the battery compartment realizes safer applications
- 4. Auto on and off function from dusk to dawn, user-friendly

| Product Model | UNI-SL01-2-020 | UNI-SL01-2-040 | UNI-SL01-2-060 | UNI-SL01-2-080 | UNI-SL01-2-0100 |
|-----------------------------|-------------------------------|-------------------|-------------------|-------------------|-------------------|
| System Voltage | 12V | 12V | 24V | 24V | 24V |
| Monocrystalline Solar Panel | 70W | 150W | 2*120/2*100W | 2*150/2*120W | 2*180/2*150W |
| LiFePO4 Battery | 12.8V/32AH (36AH) | 12.88/65AH (66AH) | 25.6V/48AH (54AH) | 25.6V/65AH (66AH) | 25.6V/80AH (90AH) |
| Luminous Efficacy | 185lm/W | 175lm/W | 170lm/W | 170lm/W | 170lm/W |
| Luminous Flux(lm) | 3700 | 7000 | 10200 | 13600 | 17000 |
| CCT | 3000K/4000K/5000K/5700K/6500K | | | | |



Large Area Lighting Solution



Unilumin large-area lighting solutions provide energy-efficient and high-quality lighting for indoor and outdoor spaces. Our industrial, flood, and sports lighting solutions improve visibility, safety, and productivity in various applications such as sports arenas, airports, classrooms, plazas, warehouses, and factories.



Improve visibility, safety,
and productivity



GeniFlood Series

Features & Benefits

1. Die-casting aluminum housing, special oxidation and excellent thermal performance, corrosion resistance, anti-aging, and longer life span
2. Ultra transparent tempered glass light-emitting surface for stable luminous flux
3. Breathing valve for preventing fogging and condensation
4. Compatible with radar sensor
5. Angle adjustment: 0-270°
6. Unique Industrial design patent
7. Multiple light distribution options
8. Self-cleaning

| Product Model | UNI-PR13 -1-050 | UNI-PR13 -2-100 | UNI-PR13 -3-150 | UNI-PR13 -4-200 |
|-------------------|-------------------------|-----------------|-----------------|-----------------|
| Input Voltage | AC120-277V 50/60Hz | | | |
| Power(W) | 50 | 100 | 150 | 200 |
| Luminous Efficacy | 145-155lm/W | 155-165lm/W | 155-165lm/W | 155-165lm/W |
| Luminous Flux(lm) | 7250-7750 | 15500-16500 | 23250-24750 | 31000-33000 |
| CCT | 3000K/4000K/5700K/6500K | | | |



StarFlood III Series

Features & Benefits

1. Die-casting aluminum housing, special oxidation and excellent thermal performance, corrosion resistance, anti-aging, and longer life span
2. High-quality LEDs, up to 140lm/W luminous efficacy
3. Tempered glass reduces UV damage to the LEDs and is easy to clean
4. Anti-vibration U-shaped bracket for enhanced stability
5. Compatibility with Radar/NEMA sensors for intelligent lighting control
6. Diverse lens options to expand the range of applications
7. 6KV surge protection, more reliable

| Product Model | UNI-PREW-1-050 | UNI-PREW-2-100 | UNI-PREW-3-150 | UNI-PREW-4-200 | UNI-PREW-5-300 | UNI-PREW-6-400/500/600 |
|-------------------|--------------------|----------------|----------------|----------------|----------------|------------------------|
| Input Voltage | AC100-277V 50/60Hz | | | | | |
| Power(W) | 50 | 100 | 150 | 200 | 300 | 400/500/600 |
| Luminous Efficacy | 140lm/W | | | | | |
| CCT | 3000K/4000K/6500K | | | | | |



ModuLux Series

Features & Benefits

- 1. Modular design offers maximum flexibility in applications
- 2. Various precise light distributions cater for extensive applications
- 3. Robust and durable housing design with external driver box
- 4. High light uniformity with low glare
- 5. Front-service module design makes it easier to maintain

| Product Model | UNI-PR05-2 | UNI-PR05-3 | UNI-PR05-4 | UNI-PR05-5 | UNI-PR05-6 | UNI-PR05-8 |
|-------------------|-------------------------------|------------|------------|------------|------------|------------|
| Input Voltage | AC100-277V 50/60Hz | | | | | |
| Power(W) | 100 | 200 | 240 | 300 | 360 | 480 |
| Luminous Efficacy | 150lm/W | | | | | |
| Luminous Flux(lm) | 15000 | 30000 | 36000 | 45000 | 54000 | 72000 |
| CCT | 3000K/4000K/5000K/5700K/6500K | | | | | |



Ares Series

Features & Benefits

- 1. Additional visors for better glare control
- 2. Compact size and light weight
- 3. Light angle adjustment range: horizontal 0° ~ 180° and vertical 0° ~ 160°
- 4. Surface spray treatment, corrosion resistance capability is Wf2
- 5. Die-casting aluminum housing, special oxidation and excellent thermal performance
- 6. Supporting HDTV broadcasting standard
- 7. Flicker free, high reliability

| Product Model | BDX-1000U | BDX-1200U | BDX-1500U |
|-------------------|---------------------------|-----------|-----------|
| Input Voltage | AC100-240V 50/60Hz | | |
| Power(W) | 1000 | 1200 | 1500 |
| Luminous Efficacy | ≥130 lm/W | ≥130 lm/W | ≥120 lm/W |
| Luminous Flux(lm) | 130000 | 156000 | 180000 |
| CCT | 5700K±200K (Customizable) | | |



Venus II Series (Hight Power)

Features & Benefits

1. Additional visors within reflective aluminum material
2. Beam angle options include 20°/40°/70°
3. Compact size and light weigh
4. Surface spray treatment, corrosion resistance capability is Wf2
5. Surge protection level: 10KV/20KV

| Product Model | LK-500B | LK-600B | LK-1000B | LK-1200B | LK-1500B |
|-------------------|---|---------|----------|----------|----------|
| Input Voltage | AC100-277V 50/60Hz | | | | |
| Power(W) | 500 | 600 | 1000 | 1200 | 1500 |
| Luminous Efficacy | 150~160lm/W | | | | |
| Luminous Flux(lm) | 65000 | 97500 | 130000 | 156000 | 195000 |
| CCT | 3000±300K /4000±300K /5000±300K /5700K±500K | | | | |

Venus II Series (Low Power)

Features & Benefits

1. Additional visors within reflective aluminum material
2. Surface spray treatment, corrosion resistance capability is Wf2
3. Compact size and light weight
4. Luminaire efficacy is up to 160 lm/W
5. Surge protection level: 10KV/20KV

| Product Model | LK-200B | LK-300B |
|-------------------|---|---------|
| Input Voltage | AC100-277V 50/60Hz | |
| Power(W) | 200 | 300 |
| Luminous Efficacy | 150~160lm/W | |
| Luminous Flux(lm) | 30000 | 45000 |
| CCT | 3000±300K /4000±300K /5000±300K /5700K±500K | |



Unicorn Series

Features & Benefits

1. Heavy duty robust design ensures durability and security
2. Quick-adjustable modular design in $\pm 30^\circ$
3. Tool-free replacement of LED modules realizes fast maintenance
4. Optional visor for less light pollution
5. $10^\circ/25^\circ/45^\circ/60^\circ/90^\circ/130^\circ$ beam angle options
6. The U-bracket can be rotated within a range of $0^\circ\sim 180^\circ$
7. 10/20KV surge protection device optional

| Product Model | UNI-PRE5-1 ~250 | UNI-PRE5-2 ~500 | UNI-PRE5-3 ~750 | UNI-PRE5-4 ~1000 | UNI-PRE5-5 ~1250 |
|-------------------|-------------------------------|--------------------|--------------------|---------------------|---------------------|
| Input Voltage | AC100~277V 50/60Hz | | | | |
| Power(W) | 250 | 500 | 750 | 1000 | 1250 |
| Luminous Efficacy | 130~140lm/W | | | | |
| Luminous Flux(lm) | 32500~35000 | 65000~70000 | 97500~105000 | 130000~140000 | 162500~175000 |
| CCT | 3000K/4000K/5000K/5700K/6500K | | | | |



Hera II Series

Features & Benefits

1. CRI > 80, satisfy all kinds of sports lighting level
2. Integrated aluminum radiator, efficient heat dissipation
3. Wf2, surface powder coating treatment, corrosion-resistant, acid and alkali resistant
4. Light angle adjustment range: horizontal $0^\circ\sim 180^\circ$ and vertical $0^\circ\sim 160^\circ$
5. Supporting HDTV broadcasting standard
6. 4mm thickness AG anti-glare tempered glass
7. Anti-glare device in pure aluminum molding

| Product Model | LK-1000U | LK-1200U | LK-1500U |
|-------------------|---------------------------------|----------|----------|
| Input Voltage | AC100~240V 50/60Hz | | |
| Power(W) | 1000 | 1200 | 1500 |
| Luminous Efficacy | ≥ 130 lm/W | | |
| Luminous Flux(lm) | 130000 | 156000 | 195000 |
| CCT | 5700K \pm 200K (Customizable) | | |



MS-A Series

Features & Benefits

1. Flicker-free lighting with CRI ≥ 80 , supporting HDTV broadcasting standards
2. Multiple beam angle options ($8^\circ/20^\circ/40^\circ/60^\circ/90^\circ$) with optional visors for glare control
3. Efficacy up to 140lm/W in a compact, lightweight design
4. Lifetime of 90,000 hours @L70 with 6063-T5 aluminum heatsink and WF2 corrosion resistance
5. IP67, IK08 protection with 10KV/20KV surge protection
6. Intelligent control options: DMX, DALI, 0-10V dimming
7. Flexible mounting options, operating from -30°C to $+50^\circ\text{C}$, 10%-95% RH
8. Suitable for indoor arenas, outdoor stadiums, and multi-purpose sports areas

| Product Model | MS-500A | MS-750A | MS-1000A | MS-1200A | MS-1500A |
|-------------------|-----------------------------------|---------|----------|----------|----------|
| Input Voltage | AC100-277V 50/60Hz | | | | |
| Power(W) | 500 | 750 | 1000 | 1200 | 1500 |
| Luminous Efficacy | 130-140lm/W | | | | |
| Luminous Flux(lm) | 65000 | 97500 | 130000 | 156000 | 195000 |
| CCT | 5000 \pm 300K /5700K \pm 500K | | | | |



Bigeye Series

Features & Benefits

1. Heavy duty robust design ensures durability and security
2. Quick adjustable modular design enhances the flexibility of applications
3. Wide wattage coverage from 400W to 1000W
4. Optional light shield reduces light pollution
5. $10^\circ / 25^\circ / 45^\circ / 60^\circ / 90^\circ$ beam angle options
6. High efficacy up to 140-150lm/W produces sufficient lumen output
7. Die-cast U bracket improves overall reliability
8. 10/20KV surge protection device optional

| Product Model | UNI-PRE6-1-400 | UNI-PRE6-1-500 | UNI-PRE6-1-800 | UNI-PRE6-1-1000 |
|-------------------|-------------------------------|----------------|----------------|-----------------|
| Input Voltage | AC100-277V 50/60Hz | | | |
| Power(W) | 400 | 500 | 800 | 1000 |
| Luminous Efficacy | 130-150lm/W | | | |
| Luminous Flux(lm) | 52000-60000 | 65000-75000 | 104000-120000 | 130000-150000 |
| CCT | 3000K/4000K/5000K/5700K/6500K | | | |



LumiBay Series

Features & Benefits

- 1. Unique patented industrial design
- 2. Die-casting aluminum housing with superior thermal design capability
- 3. Motion/brightness sensor options make it even more energy-saving
- 4. DIP switch options available for changing wattage within one size enhance the flexibility of inventory management

| Product Model | UNI-HB07-1-080 | UNI-HB07-1-120 | UNI-HB07-2-160 | UNI-HB07-2-200 | UNI-HB07-1S-080 | UNI-HB07-1S-120 | UNI-HB07-2S-160 | UNI-HB07-2S-200 |
|-------------------|-------------------------------|----------------|----------------|----------------|-----------------|-----------------|-----------------|------------------|
| Input Voltage | AC220~240V | | | | | | | |
| Power(W) | 80 | 120 | 160 | 200 | DIP 80/60 /40 | DIP 120/90 /60 | DIP 160/120 /80 | DIP 200/150 /100 |
| Luminous Efficacy | 160lm/W | | | | | | | |
| Luminous Flux(lm) | 12800 | 19200 | 25600 | 32000 | 6400-12800 | 9600-19200 | 12800-25600 | 16000-32000 |
| CCT | 3000K/4000K/5000K/5700K/6500K | | | | | | | |



Edge II Series

Features & Benefits

- 1. Die-casting aluminum housing, special oxidation and excellent thermal performance, corrosion resistance, anti-aging, and longer life span
- 2. High-quality LEDs, up to 190lm/W luminous efficacy
- 3. Anti-vibration U-shaped bracket bracket for enhanced stability, angle adjustable
- 4. Reliable sealing design, excellent resistance to dust, water, and impact
- 5. Compatible with microwave motion sensor, Zhaga interface
- 6. Optional anti-glare visor, ensuring low UGR for eye protection
- 7. 60°, 90°, and 120° beam angles are optional

| Product Model | UNI-HBE7-1-100 | UNI-HBE7-2-150 | UNI-HBE7-3-200 | UNI-HBE7-4-240 | UNI-HBE7G2-1-100 | UNI-HBE7G2-2-150 | UNI-HBE7G2-3-200/240 |
|-------------------|-------------------------------|-------------------------|-------------------------|-------------------------|-------------------------|-------------------------|---|
| Input Voltage | AC100~277V 50/60Hz | | | | | | |
| Power(W) | 100 | 150 | 200 | 240 | 100 | 150 | 200/240 |
| Luminous Efficacy | 150 / 170 / 190lm/W | | | | | | |
| Luminous Flux(lm) | 15000 17000 19000 | 22500 25500 28500 | 30000 34000 38000 | 36000 40800 45600 | 15000 17000 19000 | 22500 25500 28500 | 30000 36000 34000 40800 38000 45600 |
| CCT | 3000K/4000K/5000K/5700K/6500K | | | | | | |

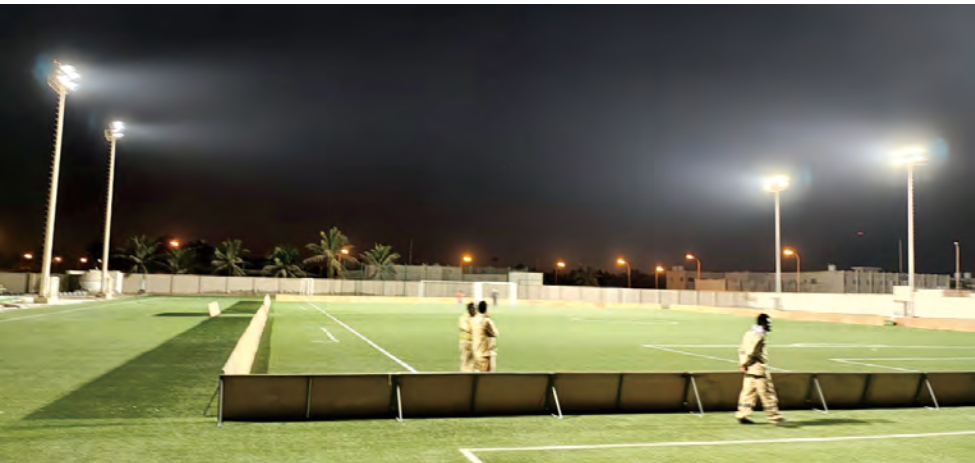


Ruby II Series

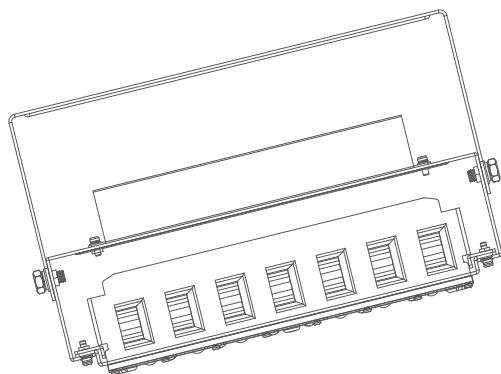
Features & Benefits

- 1. Provides powerful, efficient lighting for supermarkets, warehouses, and factories
- 2. High-performance LED ensures bright, uniform illumination for safety and productivity
- 3. Easy to install with minimal maintenance required
- 4. Reliable, long-lasting performance with reduced energy costs
- 5. Ideal solution for sustainable, high-quality industrial lighting

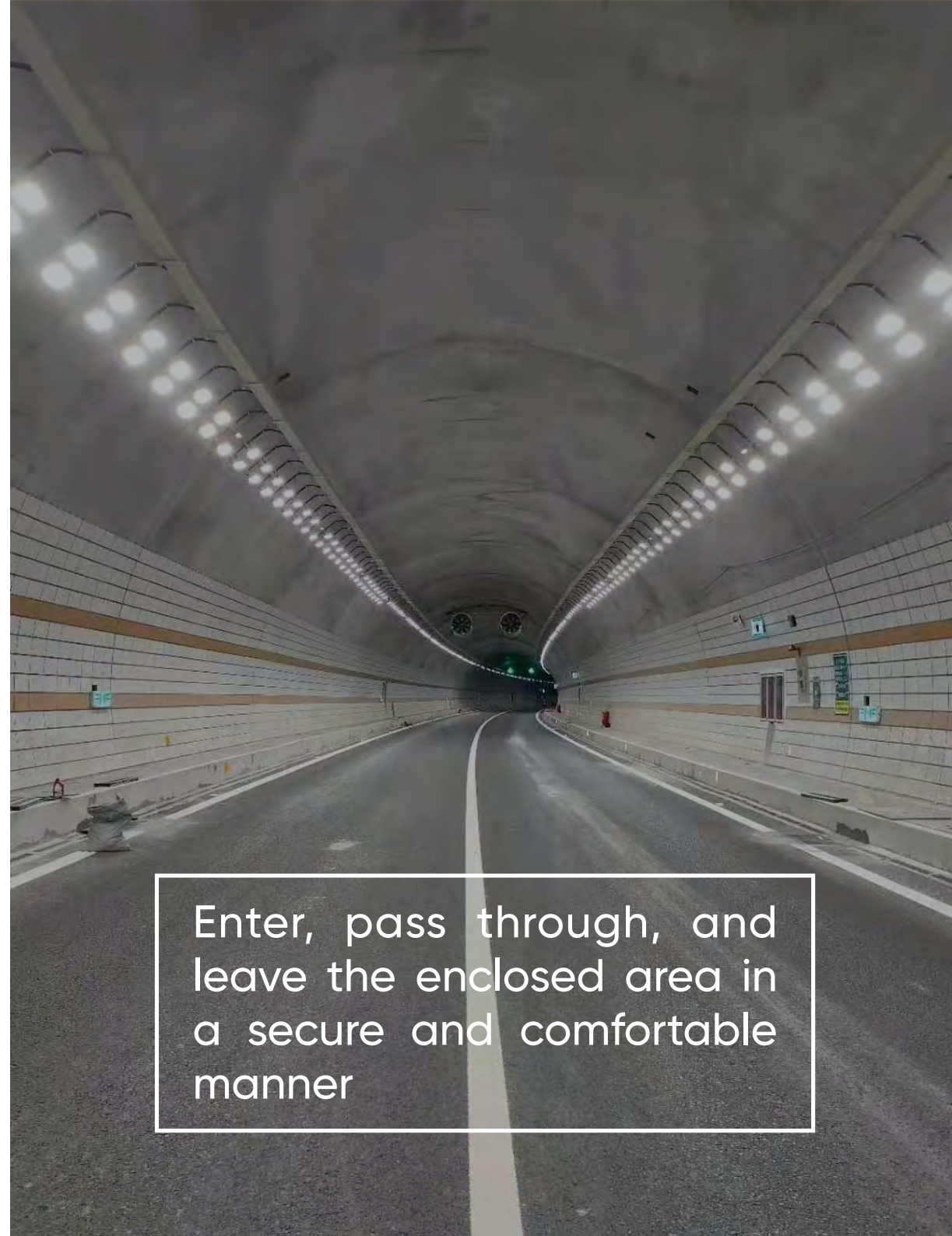
| Product Model | UNI-HBE8-1-120 | UNI-HBE8-2-200 |
|-------------------|-------------------------|----------------|
| Input Voltage | AC100-277V/50-60Hz | |
| Power(W) | 70-120W | 120-200W |
| Power Factor | PF≥0.98 | |
| Luminous Flux(lm) | 9800-15600lm | 17160-26000lm |
| CCT | 3000K/4000K/5000K/6000K | |



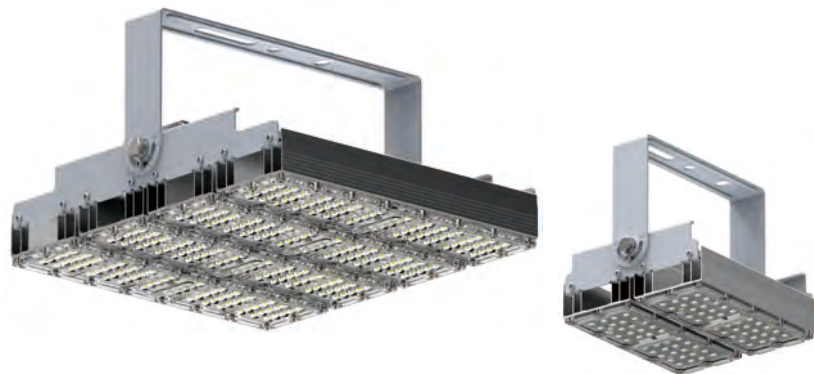
Tunnel Lighting Solution



Unilumin Tunnel Lighting Solution provides high-brightness, soft, and uniform illumination, reducing visual fatigue and pressure. It also lowers energy consumption and maintenance costs by using efficient LED luminaires and intelligent control systems. The solution also ensures uniformity in light distribution, reducing driver dizziness and fatigue. This not only improves traffic safety but also provides a comfortable driving experience.



Enter, pass through, and leave the enclosed area in a secure and comfortable manner

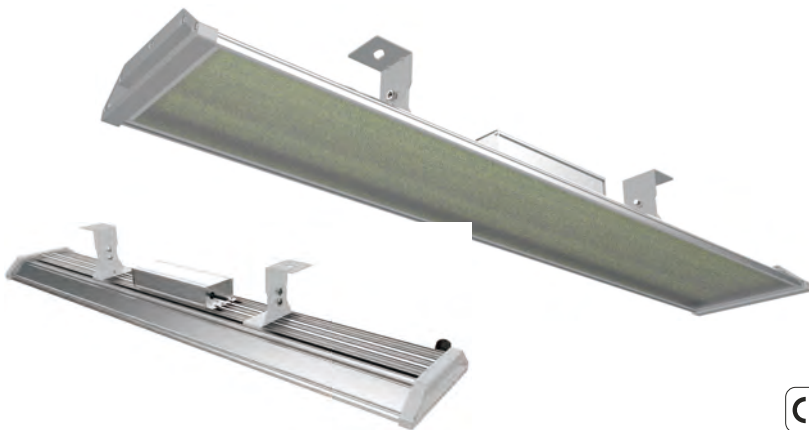


Jade Moon Series

Features & Benefits

- 1. Adopts an anodic oxidation process for enhanced corrosion and weather resistance
- 2. Up to 180lm/W luminous efficacy, more efficient
- 3. Precision and uniform light emission with SDCM<5
- 4. Glass panel is optional for easier cleaning
- 5. High flexibility with adjustable mounting angle design

| Product Model | TN06-1X | TN06-2X | TN06-1 | TN06-2 | TN06-3 | TN06-4 |
|-------------------|-------------------------------|---------------|--------------------------------|--------------------------------|--------------------------------|--------------------------------|
| Input Voltage | AC100-277V 50/60Hz | | | | | |
| Power | 40W(3030) | 80W(3030) | 60W(3030) 45W(5050) | 120W(3030) 90W(5050) | 200W(3030) 130W(5050) | 240W(3030) 175W(5050) |
| Luminous Efficacy | 130lm/W(3030) | 130lm/W(3030) | 130lm/W(3030) 180lm/W(5050) | 130lm/W(3030) 180lm/W(5050) | 130lm/W(3030) 180lm/W(5050) | 130lm/W(3030) 180lm/W(5050) |
| Luminous Flux(lm) | 5200 | 10400 | 7800/8100 | 15600/16200 | 26000/23400 | 31200/31500 |
| CCT | 3000K/4000K/5000K/5700K/6500K | | | | | |



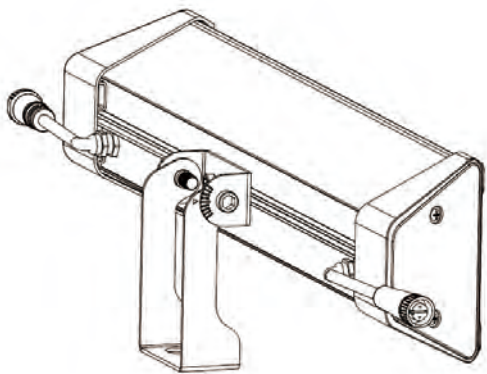
Linear Moon Series

Features & Benefits

- 1. Adopts anodic oxidation process for enhanced corrosion and weather resistance
- 2. Linear and sleek design make sure lights can be seamlessly connected with each other
- 3. Diffused tempered glass ensured the glare is controlled at the minimum level
- 4. Precision and uniform light emission with SDCM<5
- 5. High flexibility with angle adjustment from -60° to 60°

| Product Model | UNI-TNF3-1 | UNI-TNF3-3 | UNI-TNF3-4 | UNI-TNF3-5 | UNI-TNF3-6-1 | UNI-TNF3-6-2 |
|-------------------|-------------------------|------------|------------|------------|--------------|--------------|
| Input Voltage | AC100-277V 50/60Hz | | | | | |
| Power(W) | 10-100 | 20-180 | 20-300 | 20-330 | 20-200 | 20-220 |
| Luminous Efficacy | 110lm/W | | | | | |
| Luminous Flux(lm) | 1100-11000 | 2200-19800 | 2200-33000 | 2200-36300 | 2200-22000 | 2200-24200 |
| CCT | 3000K/4000K/5000K/5700K | | | | | |

Guardrail Lighting Solution



Unilumin guardrail lighting solution is designed to provide targeted illumination closer to the ground, ideal for enhancing safety and visibility in areas where installing streetlights is not feasible. These lights are glare-free, creating a more comfortable and focused lighting environment. By lighting at a lower height, they improve road edge visibility and guide traffic effectively."



Guiding the way with safety
and comfort

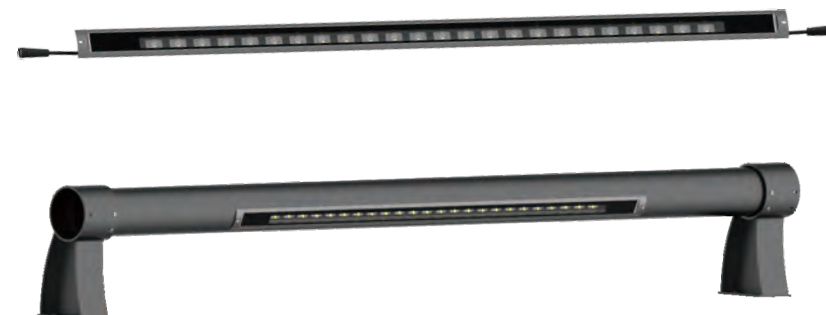


Guardlite L Series

Features & Benefits

1. Precise glare control capability and $TI \leq 1\%$
2. The efficient design boosts light utilization, saving 40% energy
3. Special optics offer performance comparable to traditional streetlights
4. Aluminum and ultra-clear tempered glass provide strength, impact resistance, and high light transmittance
5. Supports landscape lighting to enhance decorative effects
6. Passed 300H salt spray test across all models
7. Lenses ensure uniform brightness and color, perfect for wide roads and large installation gaps

| Product Model | UNI-STC7 -1-004 | UNI-STC7 -1-006 | UNI-STC7 -1-008 | UNI-STC7 -1-012 | UNI-STC7 -1-016 | UNI-STC7 -1-024 |
|-------------------|--|--------------------|--------------------|--------------------|--------------------|--------------------|
| Input Voltage | DC24V | | | | | |
| Power(W) | 4 | 6 | 8 | 12 | 16 | 24 |
| Luminous Efficacy | Standard version: 72lm/W High lumen version: 100lm/W @Ra = 80 | | | | | |
| Luminous Flux(lm) | 288/400 | 432/600 | 576/800 | 864/1200 | 1152/1600 | 1728/2400 |
| CCT | 3000K/4000K/5000K/5700K/6500K | | | | | |



Guardlite LE Series

Features & Benefits

1. Lightweight design lamp body, easy to transport and install
2. Professional low-level lighting distribution design enhances road surface illuminance with excellent uniformity
3. Fully structured waterproof, airtight cavity
4. Aluminum alloy lamp body + tempered glass lampshade provide strength, impact resistance, and high light transmittance
5. High anti-salt spray rating, suitable for seashore and other working environments
6. Low glare, providing comfortable road driving light environment

| Product Model | UNI-STC7 -2-004 | UNI-STC7 -2-006 | UNI-STC7 -2-008 | UNI-STC7 -2-012 | UNI-STC7 -2-016 | UNI-STC7 -2-024 |
|-------------------|--------------------|--------------------|--------------------|--------------------|--------------------|--------------------|
| Input Voltage | DC24V | | | | | |
| Power(W) | 4 | 6 | 8 | 12 | 16 | 24 |
| Luminous Efficacy | 70lm/W | | | | | |
| Luminous Flux(lm) | 280 | 420 | 560 | 840 | 1120 | 1680 |
| CCT | 3000K/4000K/5000K | | | | | |



Guardlite S Series

Features & Benefits

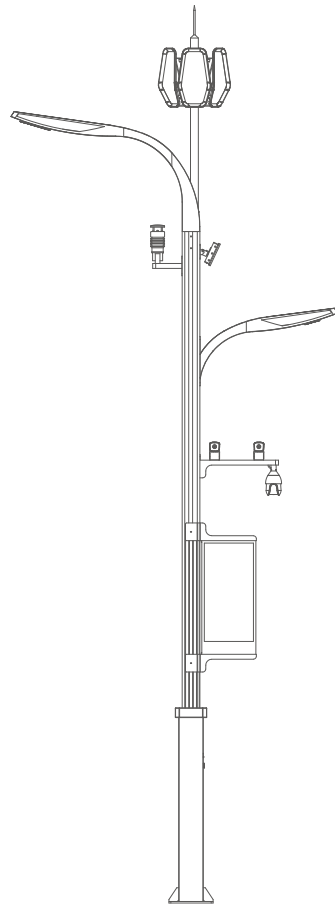
- 1. High efficiency: 6W-24W, up to 125lm/W
- 2. Compatible with road lighting, direction guidance, road contour, fog induced and other lighting methods in one
- 3. Support a variety of installation methods
- 4. Aluminum alloy lamp body + tempered glass lampshade is sturdy and durable
- 5. High anti-salt spray rating, suitable for seashore and other working environments
- 6. IP66 and IK08 protection rating

| Product Model | UNI-STD1 -1-006 | UNI-STD1 -1-012 | UNI-STD1 -1-024 |
|-------------------|---|--------------------|--------------------|
| Input Voltage | DC24V | | |
| Power(W) | 6 | 12 | 24 |
| Luminous Efficacy | 110lm/W (High efficiency version: 125lm/W) @4000K tq=25°C Ra70 | | |
| CRI | 70 | | |
| CCT | 3000K/4000K/5000K | | |



Smart City Solution

Unilumin smart poles use the integrated light pole to perform multiple public service functions to bring unprecedented benefits and convenience while providing basic lighting performance, making it easier for cities and individuals to customize a smarter and more efficient city, which is important for a sustainable world.



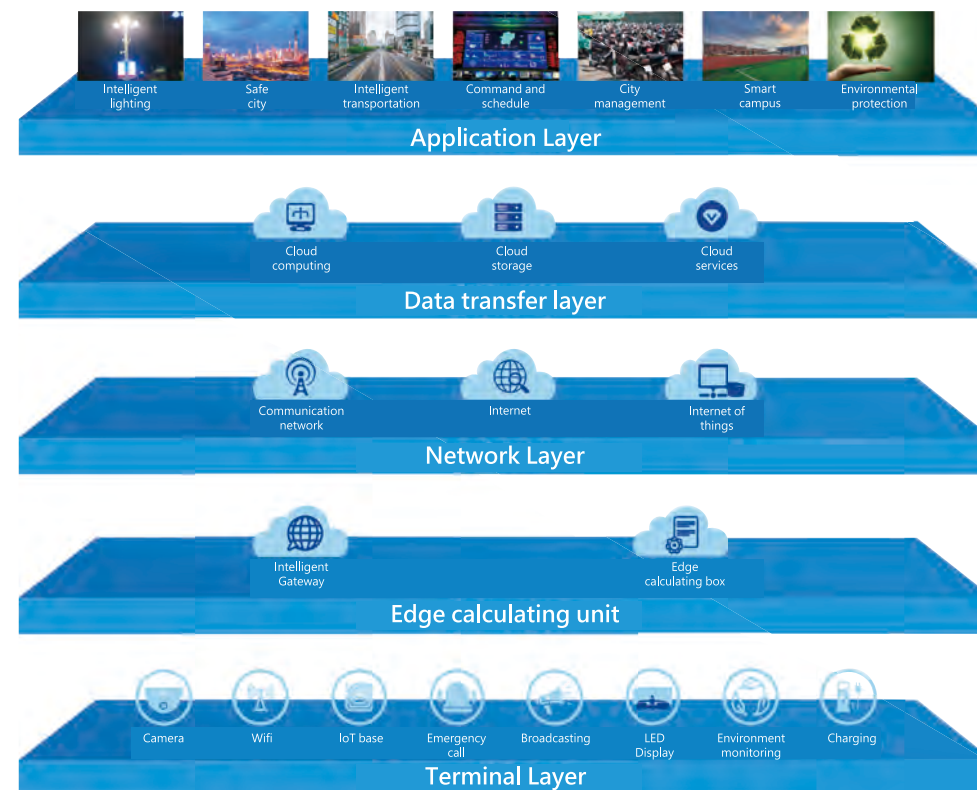
Customize a smarter and
more efficient city

Unismart Pole Management Platform

With the largest professional R&D team in LED display industry with a national laboratory, Unilumin has developed a smart pole management system called that based on cloud platform and big data management. The UniSmart pole management platform can provide users with a better use experience and provide comprehensive multi-functional solutions such as intelligent lighting, monitoring, WiFi hotspots, and smart transportation. Each subsystem of the UniSmart pole management platform can work independently and also realize the linkage between subsystems through IoT, edge computing, and other technologies. It provides a standard HTTP AP interface, which is convenient for integrating other data platform information and can quickly customize the system according to user needs.



Platform Architecture



Endless possibilities, customized design



Unilumin smart pole revolutionizes public services by integrating street lighting with diverse functions to deliver unprecedented convenience and improve quality of life.



Wi-Fi Hotspot



Intelligent Lighting



Broadcasting Device



Security Surveillance



IoT Base Station



Environment Detection



LED Display



Charging Pile



Information Query



Emergency Call

Road Lighting Series



Youth



Grace



Jade



Dysis



Spring



Silk



Rhythm



Reed

Landscape Lighting Series



Libra



Multiverse



Velvet



Jasmine



Flora



Bending



Castle



Lantern

