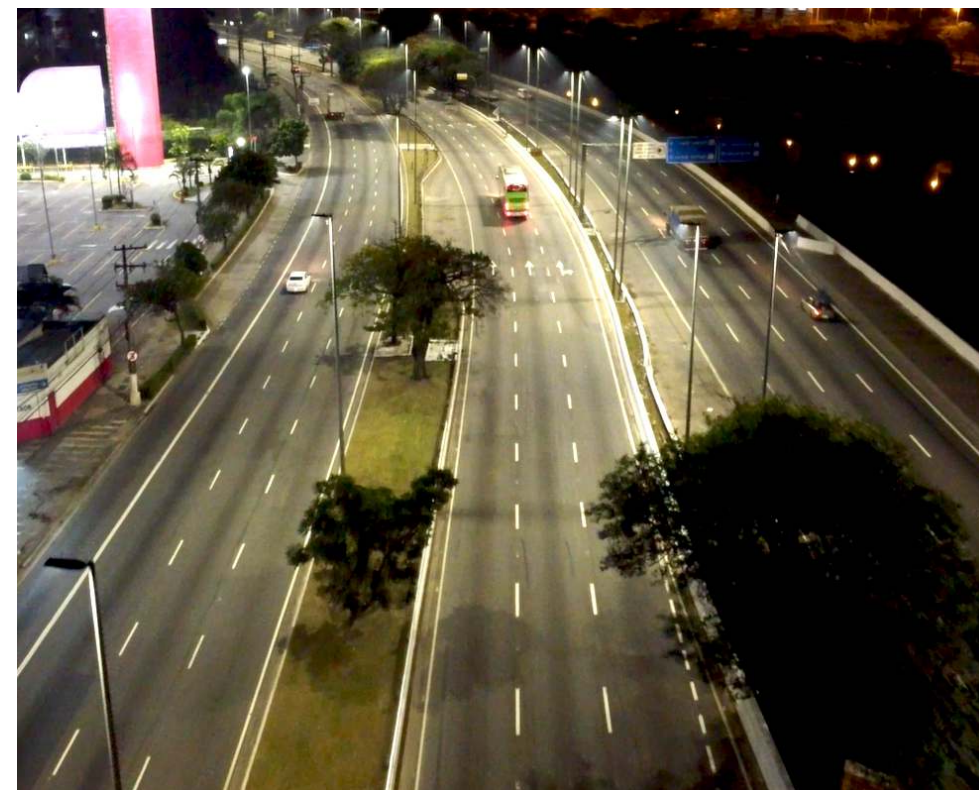


LED  
STREET LIGHT

# NANO



TOGETHER, FOR A BRIGHTER FUTURE



UNILUMIN GROUP CO., LTD

HQ Address: 112 Yongfu Rd., Qiaotou Village, Fuyong Town, Baoan District, Shenzhen 518103 China  
Manufacturing Base: Unilumin Industrial Park, 6 North Lanjing Road Pingshan District, Shenzhen, China  
TEL: +86-0755-29918999 | FAX: +86-0755-29912092 | E-mail: ledlighting@unilumin.com  
www.unilumin.com | www.unilumin-lighting.com

The product designs and specifications are subject to change without prior notice.  
All rights reserved, copy is prohibited without the permission of Unilumin Group Co., Ltd.



Official Website



Facebook



Twitter



LinkedIn



Instagram

Published: December 2023

UNILUMIN GROUP CO., LTD



## About Unilumin

---

Established in 2004, is a world-class LED lighting and display solution provider. As a key business of Unilumin Group, Unilumin Lighting has established a firm foothold in the LED lighting industry and has been a trusted global partner offering comprehensive lighting solutions and exceptional customer service. Our relentless dedication to R&D and customer satisfaction has positioned Unilumin as a top LED lighting brand, known for our worldwide presence and core competitive edges.

## Why Choose Unilumin

---



**16** Years of Outdoor Lighting Expertise



ISO/IEC 17025 Accredited LAB & Precise Automatic Production



Flexible Customization Services



Recognized by Clients in Over **80** Countries



## Nano Series

Nano redefines outdoor lighting with a remarkable efficacy of up to 150lm/w, offering a range from 15-300W across five sizes for higher flexibility in usage. Its meticulously crafted die-casting aluminum housing blends durability and aesthetics seamlessly. Advanced thermal management guarantees unwavering reliability, perfect for elevating outdoor spaces. Nano's future-ready smart capabilities and versatile compatibility make it the ultimate choice for diverse outdoor lighting applications, showcasing its standout features.

### Features & Benefits

1. Cost effective with high luminaire efficacy up to 150lm/w enabling fast payback
2. Wide power ranging from 15-300W with 5 size available
3. Die-casting aluminum housing, robust and durable
4. PC cover and glass cover are optional
5. Excellent thermal management design ensures better performance
6. Future-proof and smart ready with NEMA interface alternative
7. Compatible with both post top and side entry installations
8. Excellent photometric performance with diverse lenses available

### Application



Urban & Residential Street



Pedestrian Path



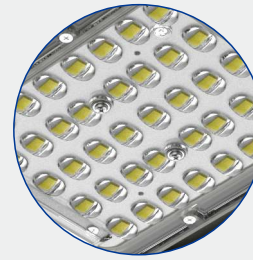
Park & Square



Rural Road



Bridge

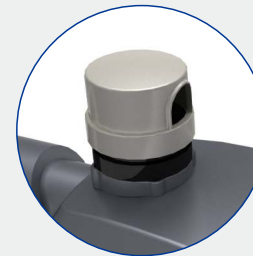
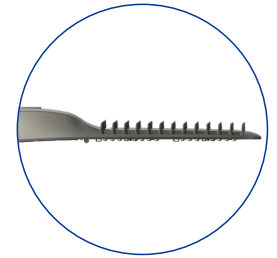


### Top-class lighting performance

Precise optics and tempered glass for stable and accurate illumination

### Sleek and streamlined design

Enhancing aesthetics while optimizing space efficiency during transport and storage

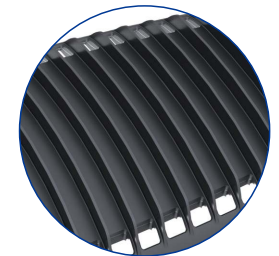


### Compatible with NEMA interface

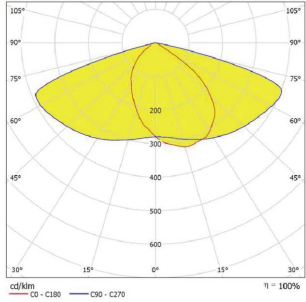
Smart-ready for enhanced capability and versatility

### Excellent thermal management

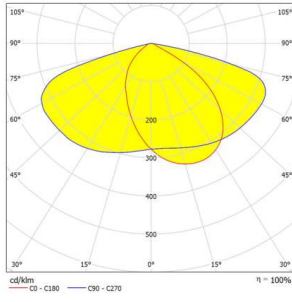
Unique heat sink design for better thermal performance



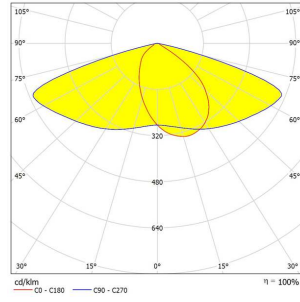
## Light Distributions



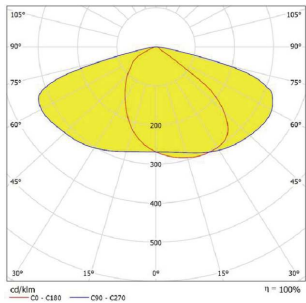
Type II (UNI-677)



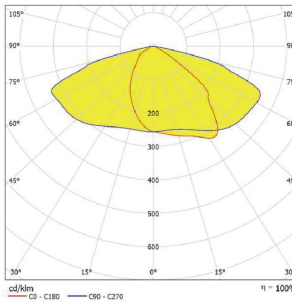
Type II (UNI-695)



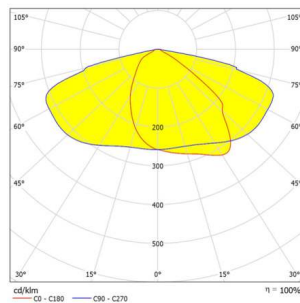
Type II (UNI-700)



Type II (UNI-717)



Type II (UNI-732)



Type II (UNI-733)

## 3030 Light Source

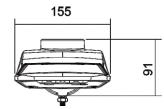
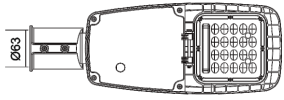
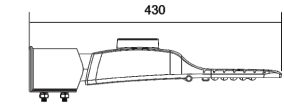
Power (W)	LED QTY (pcs)	Light Distribution	4000K Ra70@Ta=25°C		3000K Ra70@Ta=25°C	
			Luminaire Efficiency	Luminous Flux	Luminaire Efficiency	Luminous Flux
15	16	UNI-732	130lm/W	1950lm	120lm/W	1800lm
20	24			2600lm		2400lm
30	32			3900lm		3600lm
40	40			5200lm		4800lm
50	48	UNI-717		6500lm		6000lm
60	64			7800lm		7200lm
70	80			9100lm		8400lm
80	80			10400lm		9600lm
90	96			11700lm		10800lm
100	96			13000lm		12000lm
120	2*64	UNI-733		15600lm		14400lm
150	2*80			19500lm		18000lm
180	2*96		23400lm	21600lm		
200	2*96		26000lm	24000lm		
220	2*112		28600lm	26400lm		
240	2*128		31200lm	28800lm		
300	2*160		39000lm	36000lm		

## 5050 Light Source

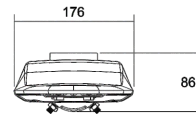
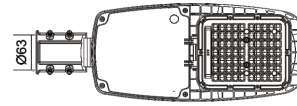
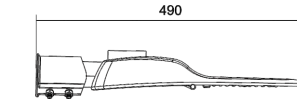
Power (W)	LED QTY (pcs)	Light Distribution	4000K Ra70@Ta=25°C		3000K Ra70@Ta=25°C	
			Luminaire Efficiency	Luminous Flux	Luminaire Efficiency	Luminous Flux
15	8	UNI-700	150lm/W	2250lm	140lm/W	2100lm
20	12			3000lm		2800lm
30	16			4500lm		4200lm
40	20			6000lm		5600lm
50	24	UNI-677		7500lm		7000lm
60	32			9000lm		8400lm
70	32			10500lm		9800lm
80	40			12000lm		11200lm
90	40			13500lm		12600lm
100	40			15000lm		14000lm
120	2*24	UNI-695		18000lm		16800lm
150	2*32			22500lm		21000lm
180	2*32		27000lm	25200lm		
200	2*32		30000lm	28000lm		
220	2*40		33000lm	30800lm		
240	2*40		36000lm	33600lm		
300	2*56		45000lm	42000lm		

The luminaire efficacies are the typical values, ±7% tolerance is reserved.

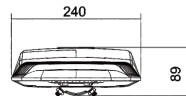
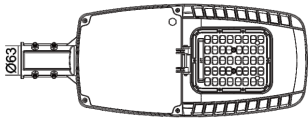
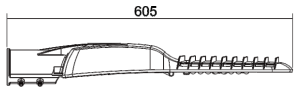
## Dimensions



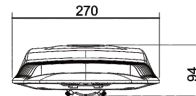
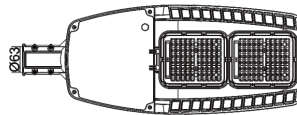
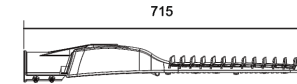
UNI-STA7-0(15-40W)



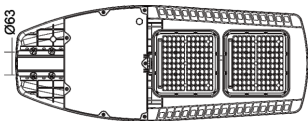
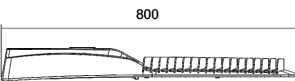
UNI-STA7-1(50-60W)



UNI-STA7-4(70-100W)



UNI-STA7-3(120-150W)



UNI-STA7-5(180-300W)

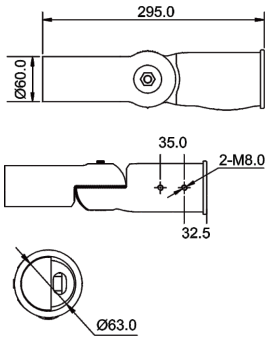
## Parameters



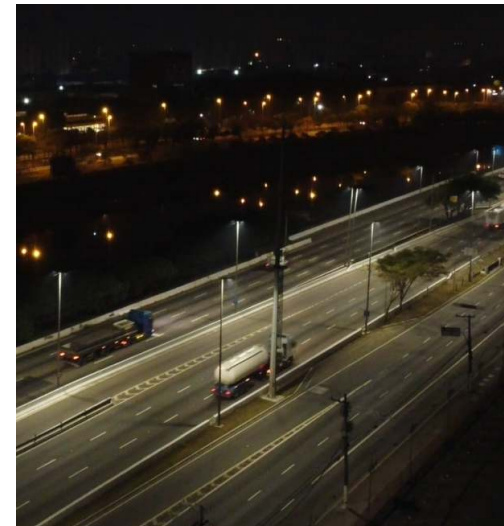
Product Model	Micro UNI-STA7-0	Mini UNI-STA7-1	Mini plus UNI-STA7-4	Midi UNI-STA7-3	Maxi UNI-STA7-5
Input Voltage	AC100-277V 50/60Hz				
Power (W)	15-40	50-60	70-100	120-150	180-300
Luminous Efficacy	130-150lm/W				
Luminous Flux(lm)	1950-6000	6500-9000	9100-15000	15600-22500	23400-45000
CRI	70				
Housing Materials	Die-casting aluminum alloy				
IP / IK	IP66/IK08				
Product Dimension (mm)	430×155×91	490×176×86	605×240×89	715×270×94	800×318×91
Packing Dimension (mm)	600×505×485 (10 in 1)	550×225×170	660×305×180	770×305×180	865×375×180
Net Weight(kg)	2.0±0.2	2.0±0.2	3.7±0.2	6.5±0.2	7.8±0.2
Gross Weight(kg)	22.0±1.0	3.0±0.2	4.7±0.2	7.6±0.2	9.0±0.2

Note: The tolerance of Luminous Flux is ±7%

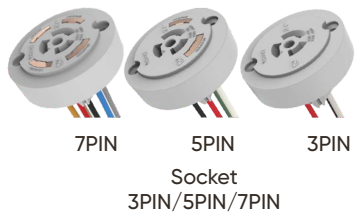
## Adapter



- The installation diameter of angle regulator is 63mm and the size of lamp pole is 60mm
- Two installation methods are horizontal installation and vertical installation horizontal installation angle adjustment range: plus or minus 20 degrees vertical installation angle adjustment range: minus 5 degrees, plus 20 degrees.
- The length of the pole end is 102mm, which is applicable to most lamps.
- The adjustment scale of 5 degrees is the minimum unit
- The main components are connected with teeth, which is not easy to loosen and has higher reliability



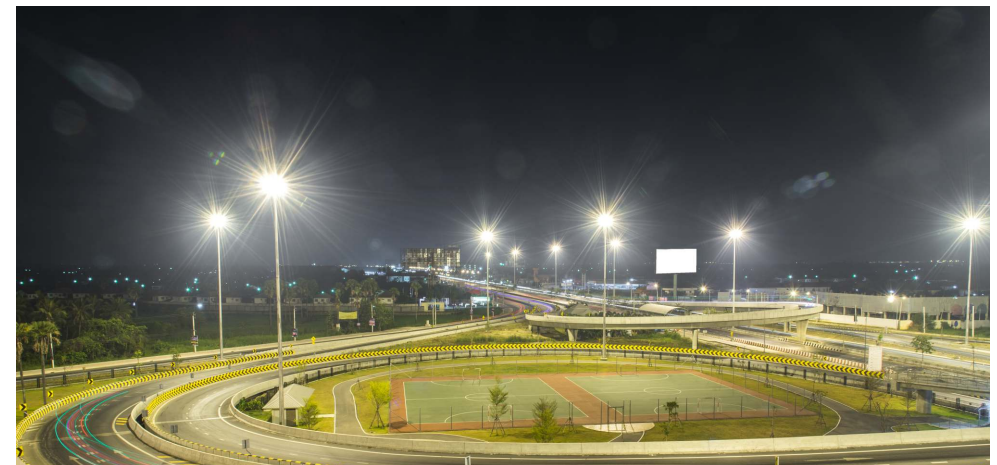
## Controller



Photocell controller      Smart control node

### Features

- With PWM and 0-10V dimming interfaces
- With the data acquisition of parameters like current, voltage, power and power factor
- With reporting the analysis of power consumption and energy saving
- With monitoring and detecting the status of LED luminaire
- Automatic faulty reporting function
- With surge protection function
- IP65 rated



Communication Interface	Communication Method	Communication Distance	Dimming Signal
NEMA	LoRa / ZigBee NB / 4G LTE	LoRa: 1000M; ZigBee: 200M NB: ∞; 4G LTE: ∞	PWM 0-10v