

LED
STREET LIGHT

NANOLITE



TOGETHER, FOR A BRIGHTER FUTURE



UNILUMIN GROUP CO., LTD

HQ Address: 112 Yongfu Rd., Qiaotou Village, Fuyong Town, Baoan District, Shenzhen 518103 China
Manufacturing Base: Unilumin Industrial Park, 6 North Lanjing Road Pingshan District, Shenzhen, China
TEL: +86-0755-29918999 | FAX: +86-0755-29912092 | E-mail: ledlighting@unilumin.com
www.unilumin.com | www.unilumin-lighting.com

The product designs and specifications are subject to change without prior notice.
All rights reserved, copy is prohibited without the permission of Unilumin Group Co., Ltd.



Official Website



Facebook



Twitter



LinkedIn



Instagram

Published: October 2023

UNILUMIN GROUP CO., LTD



About Unilumin

Established in 2004, is a world-class LED lighting and display solution provider. As a key business of Unilumin Group, Unilumin Lighting has established a firm foothold in the LED lighting industry and has been a trusted global partner offering comprehensive lighting solutions and exceptional customer service. Our relentless dedication to R&D and customer satisfaction has positioned Unilumin as a top LED lighting brand, known for our worldwide presence and core competitive edges.

Why Choose Unilumin



16 Years of Outdoor Lighting Expertise



ISO/IEC 17025 Accredited LAB & Precise Automatic Production



Flexible Customization Services



Recognized by Clients in Over **80** Countries



NanoLite Series

NanoLite series is an economical luminaire with a compact design and 160lm/W luminance efficiency, which help to save more space and costs. With 5 product sizes ranging from 20-200W, NanoLite can be applied in versatile application, even in harsh environments. Compatible with NEMA interface, NanoLite is also a smart-ready product to facilitate smart cities.

Features & Benefits

1. Die-casting aluminum housing, special oxidation and excellent thermal performance, corrosion resistance, anti-aging, and longer life span
2. With built-in 5-degree tilt steps, $-5^\circ / 0^\circ / +5^\circ$ field adjustable
3. Highly efficient with 160lm/W luminous efficacy
4. Compact design, save more space and shipping costs
5. Precise and multiple high-yield optical lenses cater to extensive applications

Application

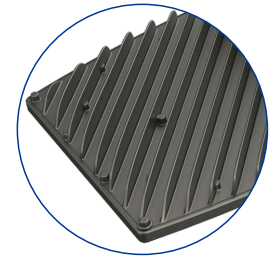


Flexible angle adjustment

Built-in 5-degree tilt steps
 $-5^\circ, 0^\circ, +5^\circ$ field adjustable

Optimized thermal design

Accelerate heat dissipation with die-casting cooling fins



Top-class lighting performance

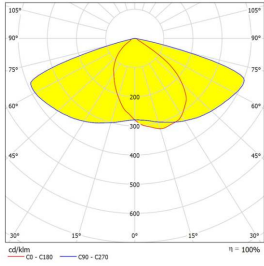
Precise optics and highly efficient LEDs

Compatible with NEMA interface

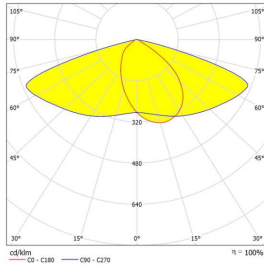
Smart-ready for enhanced capability and versatility



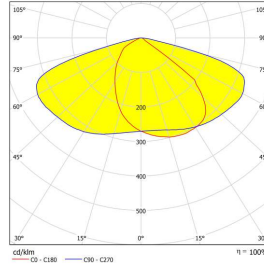
Light Distributions



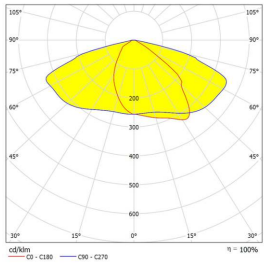
Type II (UNI-677)



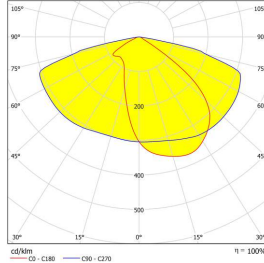
Type II (UNI-700)



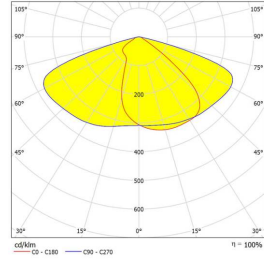
Type II (UNI-717)



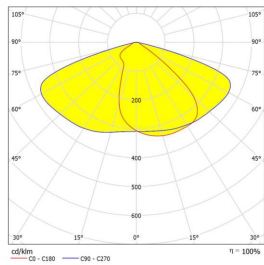
Type II (UNI-732)



Type II (UNI-839)



Type II (UNI-840-00)



Type II (UNI-840-01)

3030 Light Source

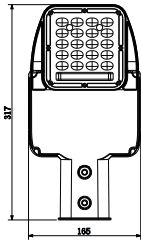
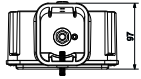
Power (W)	LED QTY (pcs)	Light Distribution	4000K Ra70@Ta=25°C		3000K Ra70@Ta=25°C	
			Luminaire Efficiency	Luminous Flux	Luminaire Efficiency	Luminous Flux
20	32	UNI-732	130 lm/W	2600 lm	120 lm/W	2400 lm
30	48			3900 lm		3600 lm
40	48			5200 lm		4800 lm
50	64	6500 lm		6000 lm		
60	64	7800 lm		7200 lm		
80	80	10400 lm		9600 lm		
90	96	11700 lm		10800 lm		
120	128	15600 lm		14400 lm		
150	160	19500 lm		18000 lm		
180	184	23400 lm		21600 lm		
200	200	26000 lm	24000 lm			

5050 Light Source

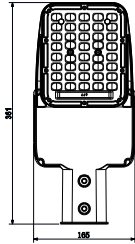
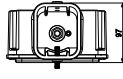
Power (W)	LED QTY (pcs)	Light Distribution	4000K Ra70@Ta=25°C		3000K Ra70@Ta=25°C	
			Luminaire Efficiency	Luminous Flux	Luminaire Efficiency	Luminous Flux
20	20	UNI-700	160 lm/W	3200 lm	150 lm/W	3000 lm
30	20			4800 lm		4500 lm
40	30	6400 lm		6000 lm		
50	36	8000 lm		7500 lm		
60	36	9600 lm		9000 lm		
80	40	12800 lm		12000 lm		
90	48	14400 lm		13500 lm		
120	60	19200 lm		18000 lm		
150	72	24000 lm		22500 lm		
180	80	28800 lm		27000 lm		
200	80	32000 lm	30000 lm			

The luminaire efficacies are the typical values, ±7% tolerance is reserved.

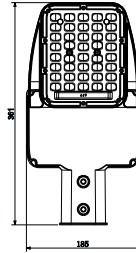
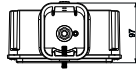
Dimensions



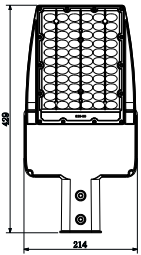
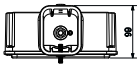
UNI-STC5-1



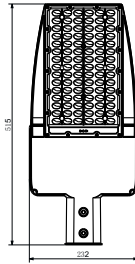
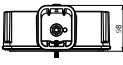
UNI-STC5-2



UNI-STC5-3

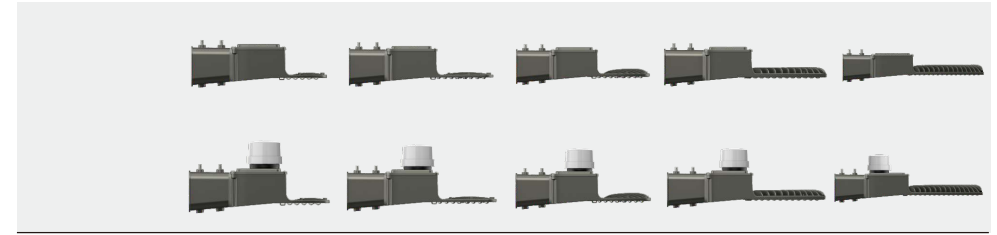


UNI-STC5-4



UNI-STC5-5

Parameters



Product Model	Micro UNI-STC5-1	Mini UNI-STC5-2	Mini plus UNI-STC5-3	Midi UNI-STC5-4	Maxi UNI-STC5-5
Input Voltage	AC100-277V 50/60Hz				
Rated Power	20-30W	40-60W	80W	90-120W	150-200W
Luminous Efficacy	130-160lm/W				
CCT	3000K/4000K/5000K/5700K				
CRI	70				
Housing Materials	Die-casting aluminum +PC				
IP / IK	IP66/IK08				
Product Dimension (mm)	317×165×97	361×165×97	361×185×97	429×214×99	515×232×98
Packing Dimension(mm)	460×385×315	460×430×315	430×255×315	500×285×320	585×300×320
Net Weight(kg)	1.8±0.2	2.0±0.2	2.3±0.2	2.8±0.2	3.7±0.2
Gross Weight(kg)	8.5±0.2(4 in 1)	9.4±0.2(4 in 1)	5.3±0.2(2 in 1)	6.5±0.2(2 in 1)	8.5±0.2(2 in 1)

Note: The tolerance of Luminous Flux is ±7%

Controller



NEMA Control

Features

- With PWM and 0-10V dimming interfaces
- With the data acquisition of parameters like current, voltage, power and power factor
- With reporting the analysis of power consumption and energy saving
- With monitoring and detecting the status of LED luminaire
- Automatic faulty reporting function
- With surge protection function
- IP65 rated

Communication Interface	Communication Method	Communication Distance	Dimming Signal
NEMA	LoRa / ZigBee NB / 4G LTE	LoRa: 1000M; ZigBee: 200M NB: ∞; 4G LTE: ∞	PWM 0-10v

