

*Unilumin*

# LED SOLAR LIGHTING SUNMASTER SERIES

## Split Solar Light

***Unilumin***

TOGETHER, FOR A BRIGHTER FUTURE

**UNILUMIN GROUP CO., LTD**

**HQ Address:** 112 Yongfu Rd., Qiaotou Village, Fuyong Town, Baoan District, Shenzhen 518103 China

**Manufacturing Base:** Unilumin Industrial Park, 6 North Lanjing Road Pingshan District, Shenzhen, China

**TEL:** +86-0755-29918999 | **FAX:** +86-0755-29912092 | **E-mail:** ledlighting@unilumin.com

**www.unilumin.com | www.unilumin-lighting.com**

The product designs and specifications are subject to change without prior notice.  
All rights reserved, copy is prohibited without the permission of Unilumin Group Co., Ltd.



## Split Type

### External Battery

## Product Description

Unilumin SunMaster solar powered LED street lighting solutions incorporate a self-contained solar power assembly sized to run the specific solar light fixture to provide green and sustainable lighting. A wide wattage options from 20W to 100W systems make it applicable to extensive outdoor off-grid lighting applications.

## Features & Benefits

- Designed to operate reliably and sustainably up to a 10-12 hours period
- Designed autonomy for 5-7 overcast or rainy days to ensure its reliable light output at night time
- Anti-theft design for the battery compartment realizes safer applications
- Precise and professional light distributions to enable high utilization of light
- High output lumen efficiency up to 170lm/W
- Highly reliable and efficient overcast charging technology
- Able to finetune our products against customer specific requirements
- Auto on and off function from dusk to dawn, user-friendly
- 3-5 years warranty

## Applications

Off-grid roads, roadway & streets, squares, residential areas, cycle path, car parks, security lighting etc.



**UNI-SL01-2**

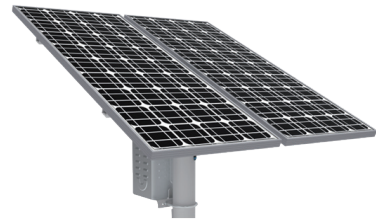
## DETAILS

## PARAMETERS



### Solar LED luminaire

Designed solar systems to run LED lights from 20W to 100W  
 L70 lifetime: 100,000 hours at Ta 25 degree Celsius ambient temperature  
 Top brand high-power LED selected at a colour rendering index min. 70  
 High output lumen efficiency up to 170lm/W with 5000K LED color temperature  
 Flexible luminaire model alternatives for options



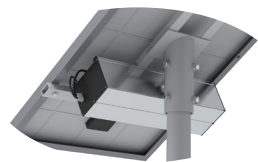
### Solar Module

Monocrystalline module with an expected longer service time  
 Solar panel models are selected based on the system load and geographical location.



### Solar Charge Controller

The solar charge controllers are highly efficient and can harvest solar energy in overcast conditions. The charge controllers can be programmed to switch off or dim the luminaires when the battery voltage drops to critical levels, which allows for the batteries to be protected from over discharge.



### Storage battery

Deep discharge maintenance-free LiFeCoPO4 battery with over 1500 life circles.  
 Autonomy days: 5 to 7 days, depending on the battery capacity

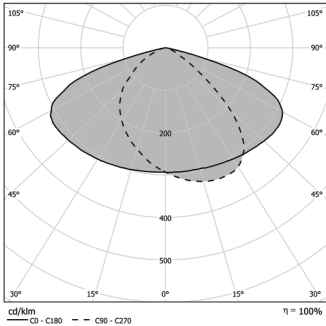
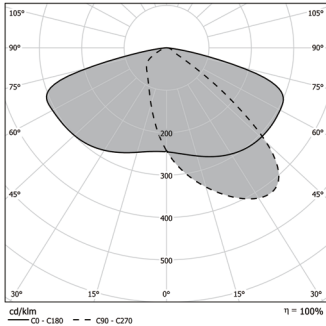
Product Model	UNI-SL01-2-20W	UNI-SL01-2-40W	UNI-SL01-2-60W	UNI-SL01-2-80W	UNI-SL01-2-100W					
Light Source	Osram									
Rated Power ( W )	20	40	60	80	100					
Luminaire Efficiency ( lm/W )	185	175	170	170	170					
Luminous Flux ( lm ) *@5000K	3700	7000	10200	13600	17000					
Color Temperature ( K )	3000±300 /4000±300 /5000±300 /5700±500 /6500±500									
Working Model	A	B	A	B	A	B	A	B	A	B
Autonomy Day	5-7 Days		5-7 Days		5-7 Days		5-7 Days		5-7 Days	
Solar Panel	70W	70W	150W	150W	2×120W	2×100W	2×150W	2×120W	2×180W	2×150W
Solar Panel Type	Monocrystallinesilicon									
Battery Capacity ( WH )	>410	>460	>832	>920	>1229	>1380	>1664	>1840	>2048	>2340
Battery Type	LiFeCoPO4									
Installation Height	4-6 m		4-6 m		6-8 m		8-10 m		8-10 m	
Spigot Diameter ( mm )	Φ48/Φ60									
Control Mode	Aluminum Housing + Extruded Aluminum Frame + PC									
Color Rendering Index	70									
Operating Temperature Range	- 10 °C ~ 45 °C									
Storage Temperature Range	- 20 °C ~ 55 °C									
Housing Material	Die casting aluminum									
Protection Grade	IP66/IK07 ( Solar Panel IK06)									

A: 2H×100% + 2H×70% + 7H×25% + 1H×70%      B: 2H×100% + 3H×70% + 5.5H×25% + 1.5H×70%

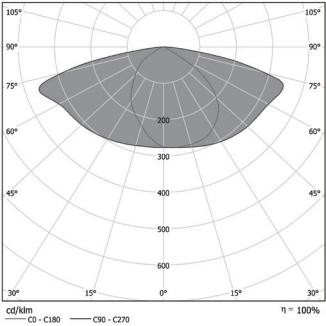
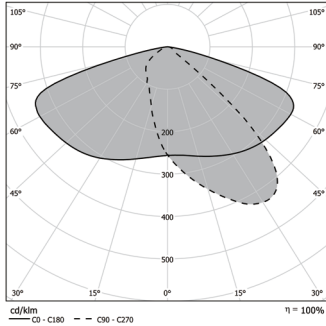
\* ±7% tolerance is reserved for the luminous flux.

# LIGHT DISTRIBUTIONS

UNI-SL01-2  
UNI-SL02-4



UNI-SL01-2  
UNI-SL02-4



**Unilumin**

Stock Code: 300232